



European
Healthcare
Design

15-17
JUNE



FINAL PROGRAMME

Agile not fragile:

Designing for resilience, renewal and regeneration



LONDON

QEII CENTRE, WESTMINSTER

info@europeanhealthcaredesign.eu

www.europeanhealthcaredesign.eu

@EHDCongress

#EHD2026

Organised by



Diamond Health Leader



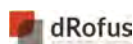
Platinum Garden Party Partners



Awards Lead Partner



Gold Design Leaders



Silver Knowledge Leaders



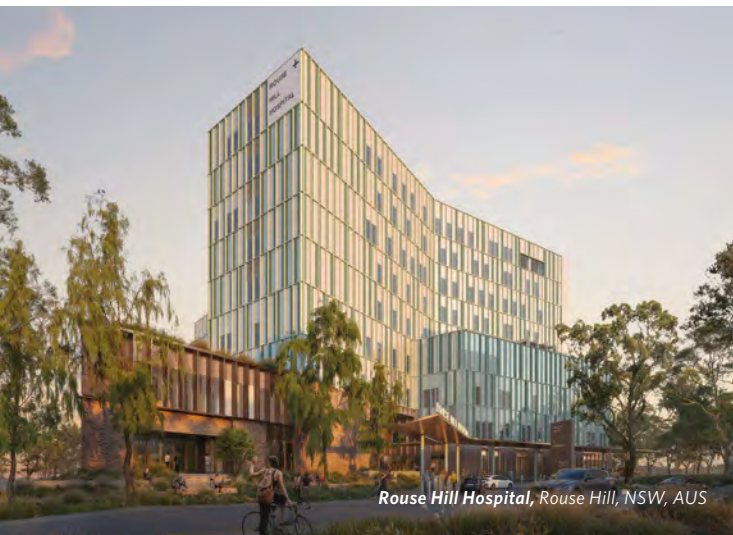
Design with Purpose

We believe the way we work can add meaning and value to the world. That ideas inspire positive change. That colouring outside the lines can illuminate fresh perspectives. And that small details yield important realisations. Above all, we believe that collaboration is the best way forward.

hdrinc.com



Children's Nebraska Behavioral Health and Wellness Center, Omaha, Nebraska, USA



Rouse Hill Hospital, Rouse Hill, NSW, AUS





The Ohio State University Hospital, Columbus, Ohio, USA



*Hillsborough Mental Health,
Charlottetown, Prince Edward Island, CAN*



Quinte Health Prince Edward County Memorial Hospital, Picton, Ontario, CAN

Dear colleagues,

We live in a state of instability not seen since the mid-20th century and multiple challenges threaten to throw whole health systems off balance. But out of risk comes opportunity, with the chance to build a more agile and resilient health ecosystem.

As well as increasing political, economic and climatic turbulence, the rapidity of technological change itself is making the future harder to foresee and the present trickier to navigate. How can we plan for the future when so much appears in flux?

AI, medical technology, and life sciences are revolutionising healthcare by enhancing diagnostics, boosting efficiency, and empowering patients. However, digital technologies also give rise to novel risks like cyber-attack, accidental data loss, and software obsolescence. A McKinsey report suggests 30 per cent of nurses' time could be saved by automating routine tasks. But it is also important to create supportive environments that promote staff wellbeing, improve work performance, enhance retention, and attract more people to healthcare.

That leads to a key issue for physical design: the huge division between the time it takes to build a hospital and the rapid changes in practice and technology. Strategies to compress this time gap include modular or prefabricated construction; standardised designs; and applying AI, virtual and augmented reality for better planning and error reduction – but ensuring resilience to change through maximising adaptability is vital. Adaptability and resilience gain even more importance through the lens of neighbourhood health. Delivering health and wellbeing services through greater collaboration of multiple interconnected partners can help reduce over-reliance on the health service, while also addressing the social determinants of health.

Overarching all of the above is climate change, which poses direct risks, such as heatwaves, drought, flooding and novel infections. Strengthening the climate resilience of healthcare infrastructure requires trying to anticipate future scenarios, and includes flexible space to provide surge capacity.

The inevitability of change and the fog of uncertainty impact on all disciplines. They challenge us to develop systems, practices, technologies and buildings that are resilient and agile. Fortunately, some of the agents of rapid change, like AI and medtech, also provide the opportunities for increasing resilience and agility.

EHD2026 will explore these issues and more. Days one and two will open with keynote sessions, before splitting into five streams. The final session of day two will be devoted to the EHD2026 Awards, supported by lead sponsor IHP. In addition to several study tours (pp79–83), day three will feature a Global Health Infrastructure Workshop and Study Tour (invitation only, p55), curated for senior leaders in infrastructure agencies, health authorities and providers. All sessions will be streamed virtually for delegates unable to attend in person.

The Congress will also host a Video+Poster Gallery of innovative research and design projects (pp47–52), two private roundtables (p35–37), a networking programme hosted by Architects for Health (pp39–41), a Knowledge + Innovation Theatre (pp43–45), an exhibition of design and technology solutions (pp114–115), a Welcome Reception, and the iconic Garden Party – hosted for the first time at Westminster Abbey (p77).

Welcome to the QEII Conference Centre in the heart of Westminster – we hope you enjoy a great Congress.



Sunand Prasad OBE

Programme director,
European Healthcare Design;
Principal, Perkins&Will, UK



Marc Sansom MBA

Co-founder, European Healthcare Design;
Managing director, SALUS Global
Knowledge Exchange, UK

Dear colleagues,

On behalf of HDR, it is our privilege to welcome you to European Healthcare Design 2026. We are proud to support this forum as the Diamond Health Leader partner and to join a community of leaders, designers, clinicians, and health system and hospital leaders who are shaping the future of healthcare environments across Europe and internationally.

The programme over the next two days reflects shared priorities that resonate strongly with our work at HDR: designing for children, young people, women, and families; rethinking mental and neurological health environments; embracing smart hospitals, robotics, and digital estates; and recognising the vital role of culture, ecology, and community in health and wellbeing. Together, these themes highlight a fundamental shift, from viewing healthcare buildings as isolated assets to understanding them as connected, adaptive systems centred on people.

At HDR, we believe the way we work can add meaning and value to the world. We believe that ideas have the power to inspire positive change; that colouring outside the lines can illuminate fresh perspectives; and that attention to small details often leads to the most important realisations. Above all, we believe collaboration is the best way forward, across professions, across borders, and across the full lifecycle of healthcare investment.

This belief is especially relevant in a time of significant transformation. Health systems today face unprecedented pressures alongside rapid technological change. Facilities must support automation, robotics, and data-driven care, while remaining flexible, compassionate, and human at every touchpoint. They must respond to increasingly complex clinical needs, support workforce wellbeing, and strengthen connections to the communities they serve, both now and into the future.

The sessions featured in this programme demonstrate how this thinking is being brought to life. From designing environments that are inclusive by default, to creating hospitals ready for robotics and emerging technologies, to exploring global exemplars from around the world, these sessions reflect the value of learning together and applying insight with purpose.

As a global practice with deep local experience, HDR works alongside health systems to translate international knowledge into deliverable, contextually grounded solutions. Our role is not only to design buildings but also to shape strategies, guide investment decisions, and create environments that improve outcomes across the continuum of care.

We are delighted to be part of European Healthcare Design 2026. We look forward to the conversations ahead, to new partnerships, and to collaborating with you to design healthcare environments that are resilient, inclusive, and truly future-ready, centred around people, informed by technology, and strengthened by community.



Jacqueline Foy

Global health director,
HDR, USA



Archus

We enable whole-system, place-based
transformation across healthcare

Locally grounded

A glowing blue lightbulb is the central focus of the advertisement. The bulb is illuminated from within, creating a bright blue glow. Inside the bulb, there is a circular inset that displays a white ECG (heart rate) waveform against a dark blue background. The bulb's base and filament are visible, and the overall aesthetic is clean and modern.

nationally aligned



4	Foreword
5	Diamond Health Leader's address
8-9	Venue information
10	EHD2026 LIVE
11	Abstract information
12-13	Committees
14-33	Programme agenda
35-37	Roundtables (<i>Invitation only</i>)
39-41	AfH Networking programme
43-45	Knowledge + Innovation Theatre programme
47-52	Knowledge Zone: Video+Poster Gallery
55	Day 3 Workshop + Study Tour (<i>Invitation only</i>)
57-75	EHD2026 Awards
77	Cultural programme
79-83	Study tours
85-87	Organisers
89-93	Event partners
95-113	Sponsors
114-115	Exhibition floorplan



QEII Centre, Westminster

The 12th European Healthcare Design Congress & Exhibition, 15–17 June 2026, will be held for the first time at the QEII Centre, in Westminster, London.

Opened by Queen Elizabeth II in 1986, the QEII Centre is central London's largest dedicated conference and exhibition space, hosting more than 400 events each year – including major government, political, and international events – from its prime location in the heart of Westminster.

Designed by architects Powell, Moya & Partners, the centre is spread over seven floors, features 32 event spaces, and can accommodate 2500 delegates. Facilities include advanced in-house AV and IT support, including live streaming, as well as catering services from the award-winning QEII Taste.

Situated opposite Westminster Abbey, the centre is within walking distance of many of London's major landmarks, including the Houses of Parliament, Big Ben, and the River Thames. Served by excellent transport links in London and beyond, major train hubs within a 15-minute walk of the centre include Victoria, Charing Cross and Waterloo.

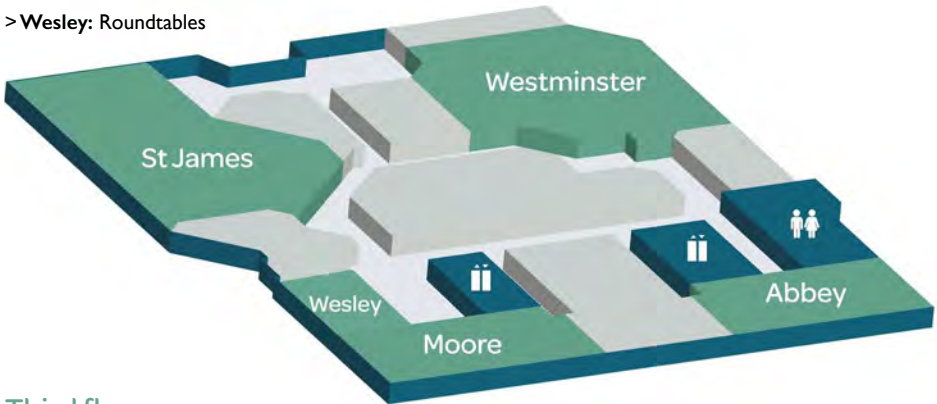
Between October 2024 and the end of March 2025, the centre hosted 13 national and international life sciences and medical conferences. Notable events in this sector include the British Society for Heart Failure's Annual Autumn Meeting, the British Thoracic Society's Winter Meeting, the UK Biobank's Winter Scientific Conference, and the Association of Anaesthetists' Winter Scientific Meeting.

The centre also upholds strong sustainability values, which focus on a zero-to-landfill waste goal, reducing its carbon footprint through energy efficiency and monitoring, and promoting sustainable practices for its events and supply chains.



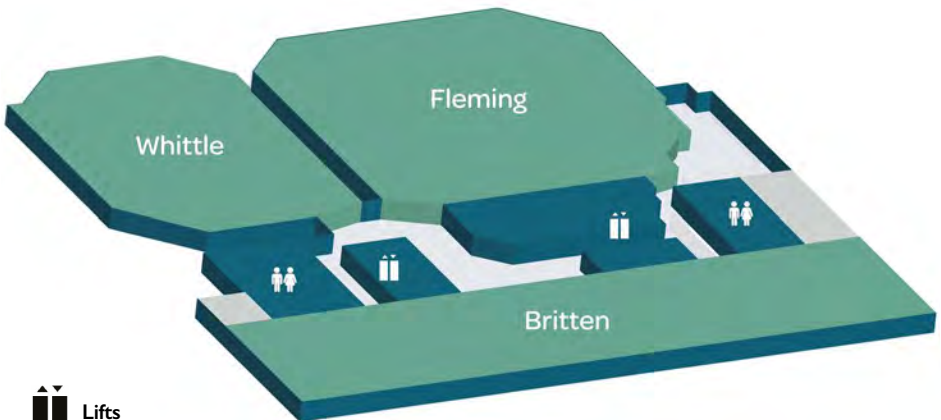
Fourth floor

- > **Westminster:** Streams 2 and 7
- > **St James:** Streams 3 and 8
- > **Abbey:** Streams 4 and 9
- > **Moore:** Streams 5 and 10
- > **Wesley:** Roundtables



Third floor

- > **Fleming:** Main conference plenary sessions, Streams 1 and 6 and the EHD2026 Awards ceremony
- > **Whittle:** Video+Poster Gallery and Knowledge+Innovation Theatre
- > **Britten:** Exhibition, Architects for Health Networking programme, Catering and Welcome Drinks Reception



Lifts



Bathrooms (including accessible)

EHD LIVE

Use the EHD2026 app to enhance your event experience: prepare your agenda; connect with colleagues and friends – old and new; explore the exhibition and Video+Poster Gallery; and catch up on recorded talks and sessions. The app will help you discover, connect and engage with attendees at the Congress.

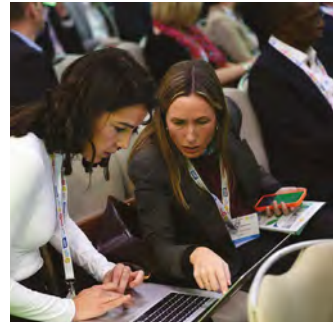
Download the app

The event mobile application is available on both the Google and Apple App Stores. To download it, search for **EHD2026** on your app store or scan the QR code. Once downloaded, you'll need to sign into the app using the email address you used when registering for the Congress.



Functions and features

- > **Watch live and recorded sessions** – Under the 'Agenda' tab, stream LIVE sessions and catch up on talks and discussions you may have missed.
- > **Explore the Video+Poster Gallery** – Found under the 'Expo' tab, this gallery showcases a wide range of innovative research and healthcare projects from across the Congress. Watch short video presentations, download posters and read abstracts.
- > **Discover the EHD2026 Awards Gallery** – Also under the 'Expo' tab, this gallery highlights projects shortlisted for the EHD2026 Awards. Explore some of the most pioneering work in healthcare design and innovation.
- > **Visit sponsors, exhibitors and partners** – Under the 'Expo' tab, learn more about sponsors, exhibitors and event partners, including their policy and research work, and their latest design innovations. View videos, download brochures and, if interested, share your contact details or schedule in-person and virtual meetings.
- > **Connect with attendees** – Under the 'People' tab, filter attendees by job role, sector or interest. Click on a delegate's profile to set up a meeting – choose a date and time, add a personalised message, or chat directly by clicking 'CHAT'.
- > **Create your own schedule** – Build a personalised agenda based on your interests and meetings, accessible at the top of the app.
- > **Join discussions** – Participate in forum discussions and share insights on Congress themes and topics beyond the event.
- > **Share your experience** – Post about the Congress on social media using #EHD2026 and tag @EHDCongress.



Session abstracts

This year, you will find all the session abstracts, as well as those for the Video+Poster Gallery, the Knowledge+Innovation Theatre, the Architects for Health networking programme, and the Day 3 Workshop online.

You can access these in two ways:

> Firstly, through the EHD event platform at events.virtualpro.com/EHD2026 and on the and mobile app, which you can download by scanning the QR code on the opposite page. On the agenda page, find the session you're interested in and click 'Join session'. You will then find all abstracts and supporting information for that session.

> Secondly, you can access these via the EHD website: www.europeanhealthcaredesign.eu/programme or by scanning this QR code:

These pages also provide full details of our speakers and presenters, so you can learn about their expertise, professional background and credentials.



The Programme Committee

The European Healthcare Design 2026 Congress is delivered by SALUS Global Knowledge Exchange in collaboration with Architects for Health and our esteemed international programme committee, the members of which are outlined below. From shaping the Congress themes and evaluating submission abstracts to chairing sessions, their knowledge, time and effort are a huge part of the success of the Congress, and we thank them for their contributions.



John Cole CBE

Honorary professor,
Queen's University Belfast, UK



Chetna Bhatia

Senior assistant director, Corporate Infrastructure Office,
National University Health System, Singapore



Göran Lindahl PhD

Professor, Chalmers University of Technology;
Director, Centre of Healthcare Architecture, Sweden



Ganesh Suntharalingam OBE

Intensivist,
London North West University Healthcare NHS Trust, UK



Christine Chadwick

Managing director,
Archus, Canada



Sasha Karakusevic BDS, MBA

Associate,
NHS Horizons, UK



Nirit Pilosof PhD

Head of research in healthcare transformation, Sheba Medical Center;
Faculty member, Tel Aviv University, Israel; Associate, Cambridge Judge Business School, UK



David Allison FAIA, FACHA

Alumni distinguished professor and Director of architecture + health,
Clemson University, USA



Cemal Sozener

Clinical professor, Emergency Department and Emergency Critical Care Center,
University of Michigan, USA



Charmaine Hope

Chief estates and facilities officer,
Buckinghamshire Healthcare NHS Trust, UK



Unni Dahl

Hospital planner,
Sykehusbygg, Norway



Karin Imoberdorf Dipl Arch, MPH

Partner and architect,
LEAD Consultants, Switzerland



Tina Nolan BArch, MBA

Managing director, Lexica (member of WSP);
Director, Healthcare Planning Academy, UK



Liesbeth van Heel

Advisor and researcher,
Erasmus University Medical Center, The Netherlands



Rhonda Kerr PhD

Executive director, economics, health services and planning,
Guidelines and Economists Network International (GENI), Australia



Tom Best MBE, MD

Clinical director for critical care and consultant intensivist,
King's College Hospital NHS Foundation Trust, UK



Cristiana Caira MArch

Artistic professor of healthcare architecture, Chalmers University of Technology;
Partner and board member, White Arkitekter, Sweden

Advisory group

Jaime Bishop

Chair, Architects for Health; Director, Fleet Architects, UK

Kate Copeland

Chair, Australian Health Design Council, Australia

Richard Darch

Founder, Infracare; Director, Healthcare Planning Academy, UK

Jonathan Erskine

Director, European Health Property Network, UK

Jim Chapman

Independent design consultant and client advisor, UK

Claire Craig

Professor of inclusive design in ageing, HHCD, RCA, UK

08.00 Registration opens

Opening keynote plenary

Supported by



Session 1

Chair: **Sunand Prasad OBE**, Programme director, European Healthcare Design; Perkins&Will, UK08.45 **Opening remarks**

09.00

**Keynote plenary: Braver not bigger: A new vision for health**Lord **Victor Adebawale CBE**, Chair, The NHS Alliance; Institute for Public Policy Research (IPPR); Social Enterprise UK, UK

09.25

**Keynote plenary: Agile health: Social medicine by design**Dr **Andrew Boozary**, Executive director, University Health Network (UHN), Canada09.50 **Panel discussion**10.15–
10.45 **Video+Poster Gallery, exhibition, coffee and networking**

Session 2

Place-based design for neighbourhood healthChair: **Kerry Harding**, Mott MacDonald, UK

10.45

A future-oriented healthcare hub for 29,000 residents in the North of Norway
Anne Guri Grimsby, Arkitema, Norway

11.05

Integrating sustainability and inclusivity for the design of a new health hub for Ipse de Bruggen**Femke Feenstra, Ellen Gedopt**, Gortemaker Algra Feenstra architects, Netherlands

11.25

Regenerative neighbourhood health design: Harold Moody Health Centre**Harriet Brisley**, Morris+Company, UK

11.45

Glasgow's new front door – Parkhead Integrated Health and Care Hub**Craig Booth**, AECOM, UK**Andrew Baillie**, NHS Greater Glasgow and Clyde, UK**Fiona Greer**, NHS Greater Glasgow and Clyde, UK

12.05

Panel discussion12.30–
13.45 **Video+Poster Gallery, exhibition, lunch and networking**



Session 3

Digital, regional and urban health systemsChair: **Matthew Blair**, BVN, Australia

13.45 **Healthcare as resilient city-building: The power of urban planning and urban design in shaping the future of care**

Dorsa Jalalian, Corey Horowitz, Stuart Elgie, DIALOG, Canada

14.05 **Smart medical city: Healthcare as a key economic driver**

Hieronimus Nickl, Nickl & Partner, Germany

14.25 **From fragmented data to actionable insight: A rapid, scalable digital–physical framework for regional infrastructure planning in Canada and Australia**

Christine Chadwick, Archus Canada, Canada;

David Nicholson, Tektology, UK

Kirsten Reite, Kirsten Reite Architecture, Canada

14.45 **Panel discussion**

15.15–15.45 **Video+Poster Gallery, exhibition, coffee and networking**



Session 4

Hospital at homeChair: **Benjamin Bassin**, Blue Cottage of CannonDesign, USA

15.45 **There is no place like home: The impact of the home environment on hospital-at-home models**

Nirit Pilosof, Tel Aviv University; Sheba Medical Center, Israel; Cambridge Judd Business School, UK

16.05 **Hospital to home rehabilitation**

Kevin Sureshkumar, Alexie Telan, Lexica, member of WSP, UK

16.25 **Virtual bedspace – the changing ecosystem of healing spaces**

Kristina Richter Adamson, Brno University of Technology, Czech Republic

16.45–17.00 **Panel discussion**

Closing keynote plenary

Supported by

Healthy
City Design

Session 5

Chair: **Max Farrell**, Healthy City Design; LDN Collective, UK

17.00 **Keynote debate: The post-hospital era: Designing a neighbourhood health system**

Panel: **Sarah Beaumont-Smith**, The Neighbourhood Health Forum, UK**Kate Shields**, Former NHS chief executive and Integrated Care Board chief executive, UK;**Fiona Daly**, NHS England, UK; **Ibrahim Ibrahim**, Portland Design, UK

17.45–18.00 **Closing remarks**

18.00–
19.00 **Welcome drinks reception,
exhibition, Video+Poster Gallery**

Hosted by



Supported by



Stream 2 begins at 10.45 in the Westminster Room, after the day's opening plenary session (08.45–10.15).



Session 6

Digital transformation and AI

Chair: **Tina Nolan**, Lexica, member of WSP, UK

-
- 10.45 **Beyond bricks and bytes: How AI will transform hospital planning, design, and operations and why AI-ready infrastructure is essential for resilient care**
Megan Angus, Daniel Tannous, H.H. Angus & Associates, Canada
-
- 11.05 **How to plan what you can't define: The digital hospital dilemma**
Fiona Parker, Andrew Castle, Currie & Brown, UK
Kathryn Foskett, GE Healthcare, UK
-
- 11.25 **Data-driven sustainable hospital design**
Savina Taouki, Eduard Boonstra, Deerns, Netherlands
Ted de Gouw, Radboudumc, Netherlands
-
- 11.45 **Enhancing intelligent hospital infrastructure: AI-enabled smart building capabilities**
John Naylor, Ryder Architecture, UK
Melanie Robson, Okana Global, UK
-
- 12.05 **Panel discussion**
-
- 12.30–13.45 **Video+Poster Gallery, exhibiton, lunch and networking**



Session 7

Smart hospitals and roboticsChair: **Victoria Head**, Archus, UK13.45 **Joining the dots: Achieving a smart hospital with integrated systems****Kevin Higgins**, Austco Healthcare, USA**Peter Ball**, Austco Healthcare, UK14.05 **Quiet hospitals, smarter care****Taja Quigley**, SmartCo Future Health, UK14.25 **Hospitals for robots****Jonathan Hasson, Michael Street**, HDR, UK14.45 **Panel discussion**15.15–
15.45 **Video+Poster Gallery, exhibition, coffee and networking**

Session 8

The digital future of NHS hospitalsChair: **David Nicholson**, Tektology, UK15.45–
17.00 **Panel: Sarah Thomas, Eamonn Gorman, Ben Raybould**, New Hospital Programme, UK**Jamie Clegg**, Milton Keynes University Hospital NHS Foundation Trust, UK

Digital transformation is fundamental to the New Hospital Programme's success and will enable hospitals to provide improved patient-centred, personalised care. This session will demonstrate the New Hospital Programme's progress and its immediate and long-term plans to enhance digital transformation across new hospitals in England, and key areas of focus on how digital interventions positively impact the patient and staff experience.

The session will cover:

- >How digital interventions across NHP schemes will support patient pathways;
- >How smart buildings, IoT, AI-driven automation, and real-time data analytics will optimise clinical pathways; and
- >NHP's intention to support and enhance digital-first patient journeys – from automated check-ins, AI-supported diagnostics, and predictive bed management – recognising and optimising the critical role that smart buildings will play in ensuring a sustainable healthcare estate for the future.

The NHP Digital team will demonstrate how learning from other digital health programmes and an evidence-based approach will support successful integration into the schemes that form the New Hospital Programme.

Stream 2 will be brought to a close at 17.00, whereupon delegates are invited to return to the Fleming for the day's closing plenary session (17.00–18.00)

Stream 3 begins at 10.45 in the St James, after the day's opening plenary session (08.45–10.15).



Session 9

Reuse, retrofit and net zero

Chair: **Sunand Prasad OBE PPRIBA**, Perkins&Will, UK

-
- 10.45 **The methodology behind the UK's first building approved under the NHS Net Zero Building Standard**
Gareth Banks, AHR, UK
Kit Knowles, Ecospheric, UK
Peter Dodd, Integrated Health Projects, UK
Matthew Groome, Countess of Chester Hospital NHS Foundation Trust, UK
-
- 11.05 **Solving the net-zero conundrum: How clinicians and engineers worked together to reduce energy consumption and emissions while improving patient outcomes**
Mike Dunne, Stantec, UK
-
- 11.25 **Reducing carbon footprint via adaptive reuse: The award-winning project in Skåne Univesity Hospital**
Cristiana Caira, Jens Axelsson, White Arkitekter, Sweden
-
- 11.45 **Sustainable healthcare modernisation in heritage structures: The Hietzing Hospital A+E Transition**
Günther Niemeck, Lucia Devitt, Sophie Noll, BDO Austria, Austria
-
- 12.05 **Panel discussion**
-
- 12.30–13.45 **Video+Poster Gallery, exhibiton, lunch and networking**



Session 10

Green hospital design

Chair: **John Cooper**, Architects for Health, UK

-
- 13.45 **Timber in Swedish healthcare architecture**
Cristiana Caira, Jens Axelsson, White Arkitekter, Sweden
-
- 14.05 **Designing for resilient healthcare environments: Evaluating green roof microclimates and air-intake safety in hospital campuses**
Mohamed Imam, Perkins&Will; AREA Research, UK/Canada
Gonzalo Vargas, Perkins&Will, UK
-
- 14.25 **Building the UK's greenest cancer centre: A holistic, collaborative home for future-focused healthcare**
David Powell, Velindre University NHS Trust, UK
Michael Woodford, White Arkitekter, UK
-
- 14.45 **Panel discussion**

15.15–15.45 **Video+Poster Gallery, exhibition, coffee and networking**



Session 11

Designing climate-resilient hospitals

Chair: **Esme Banks Marr**, BVN, UK

-
- 15.45 **Demand and capacity modelling for climate-related healthcare impacts: A case study**
Andrea Buckley, Lexica, member of WSP, UK
Tendai Wileman, Guy's and St Thomas' NHS Foundation Trust, UK
-
- 16.05 **Born to survive, or destined to fail? How to design hospitals that can withstand climate change**
Mark Walker, Stantec, UK
-
- 16.25 **Small steps, big impact: Low-cost climate solutions for healthcare**
Marta Czachorowska, m.plus.design, Poland
-
- 16.45–17.00 **Panel discussion**

Stream 3 will be brought to a close at 17.00, whereupon delegates are invited to return to the Fleming for the day's closing plenary session (17.00–18.00)

Stream 4 begins at 10.45 in the Abbey Room, after the day's opening plenary session (08.45–10.15).



Session 12

Designing for children and young people

Chair: **Jacqueline Foy**, HDR, USA

-
- 10.45 **A tale of two cities – differing neonatal care models and their impact on design and service delivery**
Neil Whatford, Gilling Dod Architects, UK
-
- 11.00 **Innovative community care through child health awareness**
Mohammed UI Haq, HLM Architects, UK
-
- 11.15 **The Path of Hope: Designing a resilient paediatric cancer hospital for renewal and healing**
Majd Ebwini, Bissan Chalich, Dar (a Sidara Company), Jordan
-
- 11.30 **Making the big feel small**
Thomas Hardin, Perkins&Will, UK
-
- 11.45 **Extended Soulspace – Child and Adolescent Psychiatric Outpatient Clinic, Vienna**
Semir Zubcevic, Monika Purschke, Albert Wimmer ZT, Austria
-
- 12.00 **Panel discussion**
-
- 12.30–13.45 **Video+Poster Gallery, exhibiton, lunch and networking**



Session 13

Humanising mental health design

Chair: Lianne Knotts, Medical Architecture, UK

-
- 13.45 **Healing architecture for an integrated psychiatric care campus: The New Institut de Psychiatrie Intégré in Brussels**
Roelof Gortemaker, Gortemaker Algra Feenstra architects, Netherlands
-
- 14.00 **Mental health rehabilitation and resilience: Designing to remove the placelessness from place**
Mark Wiltshire, Wiltshire Swain Architects, Australia
-
- 14.15 **Open minds, open spaces: Humanising psychiatric care in Madrid**
Marta Parra Casado, Virai Arquitectura, Spain
-
- 14.30 **A neighbourhood approach to mental health and wellbeing**
Teva Hesse, 4D Studio Architects, UK
Andrew Simpson, Andrew Simpson Planning, UK
-
- 14.45 **Panel discussion**

15.15–15.45 **Video+Poster Gallery, exhibition, coffee and networking**



Session 14

Agile and resilient hospital design

Chair: Jim Chapman, Independent design consultant, UK

-
- 15.45 **Designing for resilience, renewal and regeneration: Albury Wodonga Hospital Redevelopment Project – a case study**
Catherine Loker, Hassell, Australia
-
- 16.00 **Designing and building large hospitals in Chile**
Luis Esteban Alberdi, Maria Paz Godoy Casas, Sacyr, Spain
Carlos Acuña, Sacyr UK, UK
-
- 16.15 **Speed, safety and surge: A blueprint for primary healthcare infrastructure in resource-constrained settings**
Chris Richardson, Jacobs, Australia
-
- 16.30 **Agile construction, salutogenic result**
Laura Sen, Albert Vitaller, Vitaller Arquitectura, Spain
-
- 16.45–17.00 **Panel discussion**

Stream 4 will be brought to a close at 17.00, whereupon delegates are invited to return to the Fleming for the day's closing plenary session (17.00–18.00)

Stream 5 begins at 10.45 in the Moore Room, after the day's opening plenary session (08.45–10.15).



Session 15

Workforce wellbeing and performance

Chair: Paul Barach, Thomas Jefferson University, USA; Imperial College London, UK

-
- 10.45 **Staff welfare spaces standards**
Elaine Turner-Lyn, New Hospital Programme, UK
Ab Rogers, Ab Rogers Design, UK
-
- 11.05 **Anatomy of change: Rethinking healthcare learning environments**
Leanne Guy, Hassell, Australia
-
- 11.25 **Designing for healthcare workforce resilience: A comparative study of ambulatory clinic spatial configurations**
Miyoung Hong, University of Tennessee, Knoxville, USA
-
- 11.45 **Designing the 'learning hospital': Enhancing learning outcomes, health outcomes, and the workforce pipeline**
Megan Phelps, University of Sydney, Australia
-
- 12.05 **Panel discussion**
-
- 12.30–13.45 **Video+Poster Gallery, exhibiton, lunch and networking**



Session 16

Design research: Impacts in practice

Chair: Göran Lindahl, Chalmers University of Technology; Centre for Healthcare Architecture, Sweden

13.45

Redefining what healthcare architecture research can do for society

Paul Barach, Thomas Jefferson University; Imperial College London, USA/UK
Evangelia Chryssikou, University College London, UK

14.05

Considerations on the education of an architect for health

David Allison, Clemson University, USA

14.25

Merging research and design practice: A conversation on how empirical research on user behaviours can be embedded in healthcare design

Leonel Aguilar, **Lara Gregorians**, Future Cities Lab, ETH Zurich, Singapore

14.45

Panel discussion

15.15–
15.45

Video+Poster Gallery, exhibition, coffee and networking



Session 17

Design method, insight and evidence

Chair: David Allison, Clemson University, USA

15.45

Subject matter expert (SME) peer review: A value add for healthcare design

Diana Anderson, **Chai Jayachandran**, Jacobs, USA

16.05

The transformative leap from shared wards to single suites: Assessing the impact of 100-percent single-patient rooms on patient experience and staff operations at Royal Liverpool University Hospital

Deborah Wingle, HKS, USA
Jane Ho, HKS, UK

16.25

Understanding the impact of design-led healthcare innovation programmes: Qualitative case studies from frontline clinicians

Linda Ryan, Maynooth University, Ireland

16.45–
17.00

Panel discussion

Stream 5 will be brought to a close at 17.00, whereupon delegates are invited to return to the Fleming for the day's closing plenary session (17.00–18.00)

08.00 Registration opens

Opening keynote panel

Supported by



Session 18

Chair: Jaime Bishop, Architects for Health, UK

08.45 Opening remarks

09.00



Much more than beds: Reimagining buildings and infrastructure for population health

Nigel Edwards, Chair, advisory group, PPL; Expert advisor, European Observatory on Health Systems and Policies, UK

09.25



Resilience, renewal and regeneration: A national perspective on UK healthcare infrastructure

Simon Corben, Director and head of profession, NHS Estates and Facilities, NHS England, UK

09.50 Panel discussion

10.15–10.45 Video+Poster Gallery, exhibition, coffee and networking



Session 19

Delivering national hospital programmes at system scale

Chair: Matthew Holmes, Jacobs, Australia

10.45

Strengthening service collaboration and sustainability – New Zealand context

Nick Baker, Te Whatu Ora, New Zealand

11.00

Building Hospitals Better – health infrastructure delivery in New Zealand

Jorge Anaya, Jacobs, New Zealand

Margo Kyle, **Simon Trotter**, Health NZ, New Zealand

11.15

Designing resilient healthcare systems in seismic and climatic extremes: Insights from Peru's National Hospital Programme

Ignacio Higuera Hare, Ambassador of Peru to the United Kingdom, UK

Stephen Herbert, **Jason Pearson**, AECOM, UK

11.35

The future of health design: Lessons learned, from city-shaping public-private partnerships in Melbourne, Victoria, Australia

Priscilla Radice, Victorian Health Building Authority, Australia

11.55 Panel discussion

12.30–14.00 Video+Poster Gallery, exhibition, lunch and networking



Session 20

Resilience by Design: The H2.0 Alliance and Partnership model

Chair: **Sunand Prasad OBE PPRIBA**, Perkins&Will, UK

14.00 **Panel: Natalie Forrest, Emma Whigham**, New Hospital Programme, UK

Keir Dawson, Laing O'Rourke, UK

Martin John, Norfolk and Waveney University Hospitals Group, UK

A senior leadership panel exploring what NHP delivery means for resilience and regeneration in both infrastructure and delivery capability.

The key themes will be focused around:

- > delivery at scale;
- > partnership in action;
- > digital and clinical design integration;
- > sustainable and future-proof hospital design; and
- > regeneration of NHS infrastructure.

This session will demonstrate how the New Hospital Programme, through the H2.0 Alliance, is transforming how hospitals are designed, delivered and operated.

15.30–16.00 **Video+Poster Gallery, exhibition, coffee and networking**



Session 21

Delivering major hospital transformation

Chair: **Chris Liddle**, HLM Architects, UK

16.00 **John Hunter Health and Innovation Precinct 2025**

Matthew Blair, BVN, UK

Kirstie Irwin, BVN, Australia

16.20 **Architecture of care: Designing a resilient urban hospital for human renewal**

Juan Portuese, Diego Morettin, Chen Cohen, DIALOG, Canada

16.40 **Panel discussion**

Awards ceremony



Session 22

Closing plenary and Awards

Supported by



Integrated Health Projects by
VINE+ MALPINE

17.15 **European Healthcare Design 2026 Awards ceremony**

Presented by: **Jaime Bishop**, Architects for Health, UK

17.45–18.00 **Closing remarks**

Sunand Prasad, Programme director; European Healthcare Design; Principal, Perkins&Will, UK

18.30–22.00 **Garden Party being held at Westminster Abbey, College Gardens**

Supported by





Session 23

Designing modern surgical environmentsChair: **Tom Best**, King's College Hospital, UK

-
- 08.45 **Operating in the park: Daylight and adaptability in the surgical environment**
Edzard Schultz, Annette Dörr, Austin Ferguson, heinlewischer, Germany
-
- 09.05 **Enhancing operating theatre resilience through sensor-integrated lighting: Towards agile environmental and patient monitoring**
Richard McAuley, Brandon Medical, UK
-
- 09.25 **One-size OR? How the 'normal' surgical hardware highlights barriers to equity in the operating theatre**
Jessica Mudry, Toronto Metropolitan University, Canada
-
- 09.45 **Panel discussion**

10.15–10.45 **Video+Poster Gallery, exhibition, coffee and networking**



Session 24

Reimagining urgent and emergency careChair: **Cemal Sozener**, University of Michigan, USA

-
- 10.45 **Urgent treatment centres – the evolving model of frontline care**
Sharon Cook, Tom Potter, P+HS Architects, UK
-
- 11.05 **Redesign of existing St Mary's Hospital adult emergency department to support effective, efficient and safe patient flow**
Debbie So, Imperial College Healthcare Partners, UK
-
- 11.25 **A computational BIM-based spatial analysis method for the evaluation of emergency department layouts**
Aysegul Ozlem Bayraktar Sari, Cardiff University, UK
-
- 11.45 **Designing for flow and meaning: The Misericordia Community Hospital Emergency Department Redevelopment**
Jan Kroman, DIALOG, Canada
-
- 12.05 **Panel discussion**
-
- 12.30–14.00 **Video+Poster Gallery, exhibition, lunch and networking**



Session 25

Designing for new models of careChair: **Sasha Karakusevic**, NHS Horizons; Nuffield Trust, UK

- 14.00 **From fragmentation to continuity: A transitional design framework for future care settings**
Azadeh Kazeranizadeh, Tracy Lord, Billard Leece Partnership, Australia
- 14.20 **Reimagining hospital pharmacy architecture in England: Designing future-ready systems for medicines access and care**
Joshua Igbineweka, Fiona Lennon, New Hospital Programme (NHS England), UK
- 14.40 **Co-designing clinical pain communication: Using participatory action methods and boundary objects to enhance patient-clinician dialogue**
Kiara Corso, Monash University, Australia

15.00 **Panel discussion**15.30–16.00 **Video+Poster Gallery, exhibition, coffee and networking**

Session 26

Design for infection controlChair: **Ganesh Suntharalingam**, London North West University Healthcare NHS Trust, UK

- 16.00 **Co-designing Ireland's National High-Level Isolation Unit: A case example of how collective leadership and collaborative practice has helped to develop a world-class facility**
Úna Cunningham, Mater Misericordiae University Hospital, Ireland
Kevin Bates, STW Architects, Ireland
- 16.20 **Designing resilient water and wastewater safety systems in healthcare: Past lessons, current strategies, and future directions**
James Gordon, P+HS Architects, UK
Michael Weinbren, Consultant medical microbiologist; Infection control doctor; UK
Rachelle McDade, Currie & Brown, UK
- 16.40–17.00 **Panel discussion**

Stream 7 will be brought to a close at 17.00, whereupon delegates are invited to return to the Fleming for the day's closing plenary session (17.15–18.00).



Session 27

Evaluation, standards and guidance

Chair: Jonathan Erskine, European Health Property Network, UK

- 08.45 **Standardisation of evaluation: The planning and construction process of hospitals in Norway**
Unni Dahl, Lilian Leistad, Sykehusbygg HF (Norwegian Hospital Construction Agency), Norway
- 09.05 **Dynamic design standardisation: Leveraging post-occupancy evaluations to evolve design standards**
Stephanie Costelloe, BVN, Australia
- 09.25 **A tale of two cities: A case study on how overarching network design standards combined with different local input influenced the design and construction of two major concurrent hospital developments**
Tara Veldman, Billard Leece Partnership, Australia
Tim Hoffman, Sydney Children's Hospitals Network, Australia
- 09.45 **Panel discussion**

10.15–10.45 **Video+Poster Gallery, exhibition, coffee and networking**



Session 28

Strategies for healthcare estates renewal

Chair: Dan Gibson, MJ Medical, UK

- 10.45 **How do you renew your estate when there's no capital?**
Matthew Custance, Burrum River Advisory, UK
- 11.05 **Building resilience: One size doesn't fit all, but one space can**
Pollie Boyle, Emily Leonard, Mott MacDonald, UK
- 11.25 **DAISY: AI-driven early-stage design for net-zero healthcare estates**
Matthew Palmer, WSP, UK
- 11.45 **Integrated data platform (IDP) for specialist outpatient clinic**
Ting Wang, Jordan Chow, Boon Woei Lee, National University Health System, Singapore
- 12.05 **Panel discussion**
- 12.30–14.00 **Video+Poster Gallery, exhibition, lunch and networking**



Session 29

New models for public-private partnershipsChair: **Matthew Custance**, Burrum River Advisory, UK

- 14.00 **Strengthening national laboratory and research systems in fragile settings: A PPP model for operationalising Somalia's National Reference Laboratory and National Research Certification System**
Shakir Ahmed Adem, Federal Government of Somalia, Somalia

- 14.20 **Can a public-private partnership (PPP) hospital project be agile and resilient?**
Sannah McColl, Architectus, Australia

- 14.40 **Decentralised hubs of care**
Valentina Chisci, Perkins&Will, UK
Ibrahim Ibrahim, Portland Design, UK

- 15.00 **Panel discussion**

- 15.30–16.00 **Video+Poster Gallery, exhibition, coffee and networking**



Session 30

Estatecode in action: Embedding resilience and strategic control in NHS EstatesCo-chairs: **Simon Corben**, **Fiona Daly**, NHS England, UK

- 16.00 This workshop will unpack the principles and practical application of the new Estatecode, focusing on how it supports multi-year development control, commercial asset management, and strategic capital deployment. Participants will explore the mindset shift required to move from reactive investment to proactive planning, and how acute hospitals can act as anchor institutions within wider health and care systems. The session will include scenario-based discussions and peer exchange.

Stream 8 will be brought to a close at 17.00, whereupon delegates are invited to return to the Fleming for the day's closing plenary session (17.15–18.00).



Session 31

Reimagining rehabilitation design and care

Chair: **Nirit Pilosof**, Sheba Medical Center; Tel Aviv University, Israel

-
- 08.45 **National Rehabilitation Centre – a new era for rehabilitation**
Paul Bell, Ryder Architecture, UK
-
- 09.05 **Starting from worst case: Resilience through the eyes of a Ukrainian surgical rehabilitation centre**
Alex Senciuc, Katie Wood, Archus, UK
-
- 09.25 **Designing a self-rehabilitation model for geriatric inpatient care**
Sue Peleg, Tal Amalia Sicsic, Modus Health, Israel
-
- 09.45 **Panel discussion**

10.15–
10.45 **Video+Poster Gallery, exhibition, coffee and networking**



Session 32

Designing environments for women and children

Chair: **Chetna Bhatia**, National University Health System, Singapore

-
- 10.45 **Sabará Children's Hospital: Caring for children and their family with professionalism, efficiency, quality and empathy above everything**
Lara Kaiser, Perkins&Will, Brazil
-
- 11.05 **Integrating mind and body: A unified model for child and youth mental health and paediatric medicine at the Shah Family Hospital**
Claire O'Donnell, Parkin Architects, Canada
Cathy Walker, Kathy Skelly, Michelle Draper, Trillium Health Partners, Canada
-
- 11.25 **Global trends in labour and delivery, influencing one of the UK's fastest growing communities**
Jacqueline Foy, HDR, USA
Alejandro Iriarte, HDR, UK
-
- 11.45 **Redefining healthcare in Oman: Patient-centred care for women and children**
Paul Yeomans, Medical Architecture, UK
Andrew Ardill, Hopkins Architects, UK
Jeremy Cox, Strategic Healthcare Planning, UK
-
- 12.05 **Panel discussion**

12.30–
14.00 **Video+Poster Gallery, exhibition, lunch and networking**



Session 33

Innovation in cancer care design

Chair: **Richard Mann**, AECOM, UK

14.00 **Navigating precision: Co-ordinating the implementation of the Valencian Proton Therapy Center within Spain's National Deployment Programme**

Iván Paul Martín Jefremovas, Valencian Regional Department of Health, Spain

14.20 **Designing for tomorrow: Surrey's all-electric smart hospital as a model for integrated and resilient community-centred care**

Kyle Basilius, Parkin Architects, Canada

Megan Angus, H.H. Angus & Associates, Canada

14.40 **Beyond function: Designing the Marie Curie medical campus for children through emotional architecture and community-centred design**

Raluca Soaita, Tesseract Architecture, Romania

15.00 **Panel discussion**

15.30–16.00 **Video+Poster Gallery, exhibition, coffee and networking**



Session 34

Design for mental and neurological health

Chair: **Charmaine Hope**, Buckinghamshire Healthcare NHS Trust, UK

16.00 **Prince Edward Island steps up: A bold leap towards the future of mental healthcare**

Barbara Miszkiel, **Don Chong**, HDR Architecture Associates, Canada

Lianne Knotts, Medical Architecture, UK

Bill Saul, Sable ARC, Canada

16.20 **Designing for a constantly changing world – the Rare Dementia Support Centre**

Ewan Graham, Hawkins\Brown, UK

16.40–17.00 **Panel discussion**

Stream 9 will be brought to a close at 17.00, whereupon delegates are invited to return to the Fleming for the day's closing plenary session (17.15–18.00).



Session 35

Designing in-patient environments

Chair: **Liesbeth van Heel**, Erasmus University Medical Center, Netherlands

08.45 **Designing a human-centred patient room: Evidence-based, practice-driven model for enhanced wellbeing**

Magda Matuszewska, Barbara Linowiecka, Poznan University of Technology, Poland

09.05 **Hospitalisation Syndrome: A psychological, sociological and neuroarchitectural approach to prolonged hospitalisation including first-hand users' perspective**

Elke Reitmayer, Carinthia University of Applied Sciences, Austria

Jente Pauwels, Jente Pauwels Architectuur, Belgium

09.25 **Architectural levers: Balancing wellbeing and carbon in designing inpatient environments**

Giulia Scialpi, archipelago; University of Louvain, Belgium

Laurent Grisay, archipelago, Belgium

09.45 **Panel discussion**

10.15–
10.45 **Video+Poster Gallery, exhibition, coffee and networking**



Session 36

Art and interior design

Chair: **Laura Waters**, National Arts in Hospitals Network, UK

10.45 **Our places, our spaces**

Fiona Smith, Children's Health Ireland, Ireland

11.05 **Inspiring creativity and innovation in healthcare through creative health**

Penny Calvert, Salisbury NHS Foundation Trust, UK

11.25 **Children as active stakeholders in paediatric healthcare architecture: A participatory interior design framework for the New Hauner Children's Hospital in Munich**

Manuel Schmid, University Hospital Augsburg, Germany

Juliane Stiegele, Utopia Toolbox International Art Collective, Germany

11.45 **Reimagining the paediatric hospital journey through art and design**

Andrew Hall, Laura Bradshaw, CW+, UK

12.05 **Panel discussion**

12.30–
14.00 **Video+Poster Gallery, exhibition, lunch and networking**



Session 37

Ecology, culture and art

Chair: Paul Emmett, Built, Australia

-
- 14.00 **Designing the continuum: Connecting community, place, and wellness at Rouse Hill Hospital**
Rowena Sequeira, Alan Boswell, HDR, Australia
-
- 14.20 **From fragility to cognitive resilience: A neurodesign framework for age-inclusive hospital design**
Vittoria Falchini, Rosi Pachilova, Foster + Partners, UK
-
- 14.40 **Regenerating a community's connection to healing (country)**
Mark Healey, Bates Smart, Australia
Ryan Browne, Architectus, Australia
-
- 15.00 **Panel discussion**
-
- 15.30–16.00 **Video+Poster Gallery, exhibition, coffee and networking**



Session 38

Adaptive and flexible design

Chair: Paul Bell, Ryder Architecture, UK

-
- 16.00 **Mind the gap**
Pernille Olsbro Adamsen, Mette Stokholm, New North Zealand Hospital, Denmark
-
- 16.20 **Cleveland Clinic Neurological Institute: An adaptable design to last 100 years**
Simon Fraser, Andrew Ardill, Sara Madbouli, Hopkins Architects, UK
-
- 16.40–17.00 **Panel discussion**

Stream 10 will be brought to a close at 17.00, whereupon delegates are invited to return to the Fleming for the day's closing plenary session (17.15–18.00).

TRANSFORMATIONAL CAPITAL PROJECTS IN HEALTHCARE



IMPOWER is a leading change consultancy, supporting clients to deliver transformative capital programmes that improve outcomes and maximise investment value.

Healthcare capital programmes offer a key opportunity to transform care delivery at scale, delivering better outcomes that cost less.

IMPOWER's unique EDGEWORK® approach focuses on outcomes, supporting capital projects from inception through to operational commissioning, providing the tools to maximise benefits and reduce risks associated with capital programmes. The IMPOWER team has worked on some of the largest and most complex public sector capital programmes in the UK and supports capital programmes by:

- Putting the patient and population voice at the heart of change.
- Providing strategic support to align system partners and contractors, delivering high-quality business cases efficiently.
- Using capital investment to drive transformation for whole systems, delivering benefits at the front line.

Closing the transformation gap: Delivering system transformation alongside commissioning new hospital projects



Invitation only | Monday 15 June, 12.30-14.15 | Wesley Room, Floor 4

The question for this session will be: How can the New Hospital Programme (NHP), nationally and locally, engage with the wider transformation agenda – across neighbourhoods, digital transformation, the Ten-Year Plan – to deliver fit-for-the future health services?

The NHP relies on major service transformation: reducing length of stay and acute bed demand by redesigning pathways and shifting more care into the community and people's homes. New models of care and the left shift have been discussed for a long time but, despite this narrative, money has continued to flow into bedded care. Over the last five years, there has been around 24-per-cent real-terms growth in secondary care while primary care has seen about 3 per cent. The scale of the transformation needed to change this should not be underestimated.

Alongside this, new hospitals can introduce material recurrent cost pressures, increasing the need for real productivity and pathway change as part of a capital programme. This creates a “transformation gap”: the gap between what a business case assumes and what services are ready to deliver at opening.

This session brings together national and local teams to: showcase what programmes are already delivering; set a shared ambition for transformation – and what is possible through NHP programmes; explore how individuals can take on responsibility for driving transformation in their own roles; and align and lead on the emerging policy areas to which the Programme connects: the Ten-Year Plan, neighbourhood health, the left shift, and digital transformation.

This session will: set out the specific challenges of the “transformation gap”; agree an ambition for transformation enabled by NHP builds; share lessons from new builds that have delivered meaningful service change alongside capital delivery; test what the NHP's role should be in supporting transformation, nationally and locally; and agree a small set of practical next steps for programme and national teams to take forward together.

Chair:



Kate Shields

Former NHS chief executive and Integrated Care Board chief executive, UK

Panel:

David Nicholson, Chair; Independent Digital Group, NHP; Global CEO, Tektology, UK

Sophie Hargreaves, Deputy programme director and TOM lead, New North Manchester Hospital Project, UK

Samuel Rose, Director; IMPOWER, UK

Sarah Thomas, Digital director; NHP; UK

Attendees:

Ellie Lane, Deputy programme director; Hinchingsbrooke Hospital Redevelopment Programme, North West Anglia NHS FT, UK

Alexis Carlyon, Women and children's programme manager; major capital projects, Royal Cornwall Hospitals NHS Trust, UK

Chris Knights, NHP programme director; Mid Cheshire Hospitals NHS FT, UK

Nicola Clemo, Deputy programme director; Mid Cheshire Hospitals NHS FT, UK

Julia Kazimierczak, Clinical operations director; NHP; Norfolk and Waveney University Hospitals Group UK

Laura Brewster, Joint programme director; Oriel, UCL Institute of Ophthalmology, UK

Julie Holroyd, Director of hospital operations, NHP; UK



HOARE LEA 

[HOARELEA.COM](https://www.hoarelea.com)

**Rehabilitating the
healthcare machine
through the power and
potential of people-first
design since 1862.**

LET'S TALK

Andy Vernon Director and Sector Lead – Healthcare
AndyVernon@hoarelea.com

Neighbourhood health centres – designing for community wellness

Organised by

HOARE LEA 
A TETRA TECH COMPANY

Invitation only | Monday 15 June, 15.30-17.00 | Wesley Room, Floor 4

The aspirations of the NHS' Ten-Year Plan are bold and ambitious and have the potential to change health, wellness and outcomes for all UK citizens way beyond the decade-long timeframe of the Plan itself. Bringing healthcare closer to home through neighbourhood health centres (NHCs) will see a welcome return to a more community-minded health service, which will give the support people need closer to home.

With record investment into NHS capital planned for multiple programmes of work, it will be critical that the NHC programme responds to the ever-changing needs, hopes and concerns of the different voices across UK communities.

No two neighbourhoods are the same, which will encourage a deeper level of stakeholder engagement and collaboration with local authorities and other system providers to build the future of community healthcare in the UK. NHCs will be seen as the place to go for most health needs in the community and will put the person at the centre of how health is delivered.

Chairs:



Dr Paul Hanna

Chartered psychologist, director;
Hoare Lea, UK



Andy Vernon

Health sector lead,
Hoare Lea, UK

Panel:

Andy Vernon, Health sector lead, Hoare Lea, UK

Stuart McArthur, Director – health sector, IHP and Sir Robert McAlpine, UK

Matthew Blair, Principal, BVN Architecture, UK

Martin Rooney, Regional director, Archus, UK

Birgitte Juel Lau Eriksen, Design director, Arkitema, Denmark

Andy McNulty, Director; head of healthcare sector; Gleeds, UK

Sarah Beaumont-Smith, UK strategy director; (FIG), FIM, UK



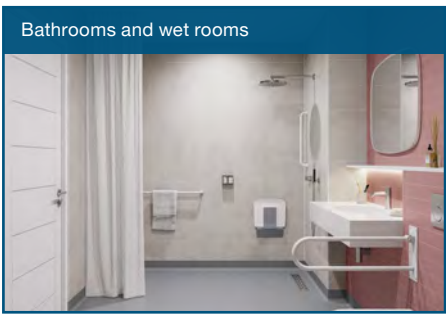
altro

Healthcare floor and wall solutions

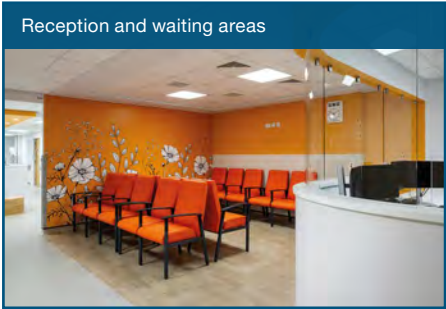
Altro hygienic solutions promote wellbeing for patients, visitors and staff

We can work with you to select the best floor and wall surfaces for even the most complex requirements. Plus, ours are the only approved walls on the Procure 23 supplier list with DSDC accreditation.

- ✓ Impact sound reduction
- ✓ Integrated wall and floor system
- ✓ Adhesive-free floor options, reducing disruption and odours
- ✓ Easy to clean and maintain
- ✓ HACCP approved floors and walls



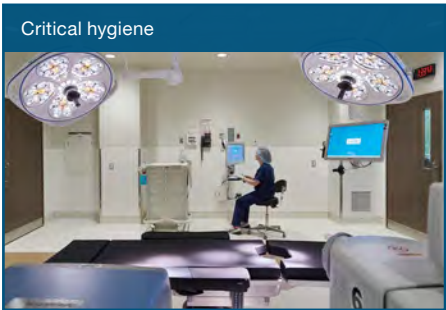
Bathrooms and wet rooms



Reception and waiting areas



Wards



Critical hygiene

Architects for Health Networking Programme

Supported by



The Architects for Health Networking Area features panel discussions and conversations curated under four workstreams: KnowledgeShare, Best Practice, Strategic Engagement, and Fostering Future Talent.

Monday 15 June | Britten Room

Agile not fragile

Does centralisation solve the problem – or does decentralisation deliver better healthcare outcomes for all?

10.45–
12.30 **Chair: John Cooper**, Architects for Health, UK; **Panel: Matthew Tulley**, Imperial Healthcare NHS FT, UK; **Fiona Daly**, NHS England, UK; **Matthew Custance**, Burrum River Advisory, UK; **Charmaine Hope**, Buckinghamshire Healthcare NHS Trust, UK

KnowledgeShare

This session will explore three key facets of healthcare design: creative health, neighbourhood health, and mental health. Beyond the bricks and mortar, what do designers need to do to deliver spaces that support patient and staff wellbeing, enhancing recovery and care?

13.45–
14.30 **Embedding the arts into hospital design: A call for policy and practice**
Exploring how creative health can be systematically integrated into healthcare architecture through policy, design frameworks, and a mandate for art in new hospital builds.

Chair: Alice Green, Arcadis; AfH executive member, UK; **Panel: Abigail Pride**, NHS Estates & Facilities, NHS England, UK; **Laura Waters**, Derby & Burton Hospitals Charity; National Arts in Hospitals Network, UK; **Ruth Charity**, Artlink, Oxford University Hospitals NHS Trust, UK

14.45–
15.30 **In conversation: Post-occupancy evaluation: Unlocking insight, value and better future design**
Chair: Caroline Mulholland, Sir Robert McAlpine; AfH executive member, UK
Panel: Mel Jacobsen-Cox, NHS England, UK; **Stephanie Costelloe**, BVN, Australia

Best practice

In this session, we will be joined by the Healthcare Infection Society, which will share insights on the Built Environment Infection Prevention Initiative and how industry collaboration is accelerating new approaches to the design of high-risk healthcare environments. Our second conversation will invite shortlisted practices for the EHD2026 'Design for Neighbourhood Health' Award to compare and contrast 'best practice' globally.

15.45–
16.25 **Healthcare Infection Society's cross-industry collaboration – BEIPI (Built Environment Infection Prevention Initiative): Current position and next steps**

Chair: James Gordon, P+HS Architects; AfH executive member, UK
Panel: Dr Manjula Meda, Healthcare Infection Society, UK; **Rachelle McDade**, Currie & Brown, UK

16.30–
17.00 **Best-practice neighbourhood health design: International comparisons**

Chair: Bob Wills, Medical Architecture, UK; **Panel: Simon Boundy**, Stride Treglown, UK
Project case studies: Anishnawbe Health Toronto Indigenous Community Health Centre, Canada, presented by Michael Moxam, Stantec, Canada
New Betio Hospital (Stage 1), Kiribati, presented by Matthew Holmes, Jacobs, Australia



mjmedical

Planning the future in healthcare

MJ Medical supports the delivery of innovative and efficient healthcare facilities that are responsive to the changing needs of the communities they serve.

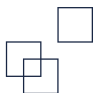
Healthcare
Planning



Healthcare
Design



Equipment &
Technology



[mjmedical.com](https://www.mjmedical.com)

+44 (0)1872 226 770

enquiries@mjmedical.com

Tuesday 16 June | Britten Room

Supported by



Strategic engagement

This session will draw on AfH's role as the 'voice of the industry' and engagement with NHS Facilities and Estates, relevant All Party Parliamentary Groups (APPGs) and the Future Standards Working Group.

Through research initiatives, knowledgeshare and technical review, we will explore the ways in which Architects for Health supports continuous improvement in the technical delivery of healthcare design.

10.45–
11.45 **Developing guidance that delivers: Standardising the structure for HBN – what do we need and why?**

Chair: Jaime Bishop, Fleet Architects; AfH, UK

Panel: Michael Rope, Helen Griffin, NHS England, UK

Abigail Pride, NHS Estates & Facilities, NHS England, UK

Nigel Pilkington, Ikon Architecture, UK

Iona McAllister, MJ Medical, UK

Matthew Hird, Todd Architects, UK

Fostering future talent

Our 'Fostering future talent' pillar celebrates the work of architecture and design students as they build their career in healthcare design, supporting them on their journey to professional practice. In this session, we will invite participants in our programmes to share their stories. Our collective conversation will focus on 'The agile architect'. What do architects new to healthcare need from the sector to help build their careers? How do we translate inspirational research from paper to practice?

14.00–
14.25 **Cybernetic field hospitals: Integrating advanced technologies into post-crisis healthcare**
Habban Ali, Reddy Architecture + Urbanism; The Bartlett School of Architecture, UCL, UK

14.30–
15.30 **The agile architect: Widening access to healthcare architecture for a stronger, more resilient profession**

Co-chairs: Linda Jordan, DAY Architectural; AfH executive member; UK

Belen Francos-Taylor, Ansell + Bailey Architects; AfH executive member; UK

Panel: Habban Ali, Reddy Architecture + Urbanism; The Bartlett School of Architecture, UCL, UK; Avery Fletcher, UCL, UK



**We're not just keeping
pace with change—we're
helping define it.**

[STANTEC.COM/HEALTH](https://www.stantec.com/health)



Penn Medicine, Seraph-McSparren Pediatric Inpatient Center,
Lancaster, Pennsylvania, USA

Knowledge + Innovation Theatre

Situated at the heart of the Knowledge Zone on the exhibition floor, the theatre provides an accessible platform for knowledge exchange between designers, clinicians, researchers, industry innovators, and health system leaders. Through a series of presentations, case studies, and interactive discussions, speakers will share practical insights into how thoughtful design and emerging technologies can improve patient experience, staff wellbeing, operational efficiency, and long-term system resilience.



Monday 15 June | Whittle Room

13.45–15.00 – Health system planning, delivery and transition

13.45–
14.30 **International insights: Who protects patient value when delivery models change?**
Catherine Zeliotis, Stantec, UK
Simon Kydd, Sir Robert McAlpine, UK
Matthew Tulley, Imperial College Healthcare NHS Trust, UK
Cathy Walker, Angela Jackson-Lee, Trillium Health Partners, Canada

Curated by
 Stantec

14.40–
15.00 **Key insights from transition planning across 600+ healthcare facilities**
Evan Rutherford, Health Care Relocations, Canada

Curated by


15.45–17.00 – Social value and communities

This session explores how healthcare design can respond to wider social challenges and support more inclusive, community-focused models of care. Drawing on UK and international examples, the session examines how healthcare systems can extend beyond traditional hospital boundaries to address social determinants of health, particularly for vulnerable and marginalised populations. It highlights approaches that integrate healthcare with housing, community services, and supportive environments, while also emphasising the importance of co-design and lived experience in shaping more welcoming, dignified spaces.

15.45–
16.05 **Included by design: Learning from lived experience to shape inclusive healthcare spaces and services**
Emma Geoghegan, Technological University Dublin, Ireland
Tara McGinty, Aileen Igoe, Mater Misericordiae University Hospital, Ireland

16.05–
16.25 **Social Medicine Housing Initiative (Dunn House)**
Kerri Culver, Andrew Boozary MD, University Health Network (UHN), Canada

16.25–
17.00 **Panel discussion**

Parkin Architects is proud to sponsor European Healthcare Design and to have our design leaders contributing to the conference programme, sharing Canadian insights and advancing the future of healthcare environments.

The New Peter Gilgan Mississauga Hospital and the Shah Family Hospital for Women and Children, Ontario, Canada

Rendering by Adamson Architects and Cicada



Robin Snell, Director



Claire O'Donnell, Principal




Kyle Basilius, Principal





Tuesday 16 June | Whittle Room

10.45–12.05 – Innovation + technology

- 10.45–11.05 **Beyond the concept: How AI and industrialised construction are changing healthcare delivery**
Richard Fox, Reds I0, UK

Curated by

- 11.15–11.35 **Designing for silence, signal and speech: The three acoustic priorities in healthcare**
Pascal van Dort, Rockfon, UK

Curated by

- 11.45–12.05 **Resilient hospital logistics by design**
Arif Yildirim, Swisslog Healthcare, Germany

Curated by


14.00–15.20 – Designing neighbourhood health ecosystems

- 14.00–14.45 **Putting the mega hospital on pause: Rethinking capital delivery, including community-based, distributed healthcare infrastructure**
Chair: Kyle Basilius, Parkin Architects, Canada
Panel: Robin Snell, Parkin Architects, Canada
Gloria Kain, The Hospital for Sick Children, Canada
Per Hellevik Carlsson, Sykehusbygg, Norway
Fiona Greer, NHS Greater Glasgow and Clyde, UK

Curated by

- 15.00–15.20 **Intentionally radical: What should neighbourhood health become?**
Kris Mackay, Rob Trimble, 360 Degree Society, UK

Curated by






AECOM

PARKHEAD HUB

Improving healthcare outcomes

We collaborate to deliver resilient healthcare projects and programmes that support renewal and create positive impact for our clients, their staff and communities they serve.

[aecom.com](https://www.aecom.com)

Video+Poster Gallery

Supported by



Supported by AECOM, the Video+Poster Gallery gives delegates an opportunity to explore exciting research projects and design schemes.

View the posters in the Whittle Room on the third floor of the venue.

To view the videos, and their abstracts, visit the Video+Poster Gallery by either scanning the QR code to the right or downloading the mobile app (see page 10).



Theme: Population health

- P01** **Health-based product design for sleep and circadian rhythm: An approach to biosignal application**
Mina Sadat Tabatabaee, Hassan Sadeghi Naeini, Iran University of Science and Technology, Iran

- P02** **The Campus of Care: An ecosystem approach to non-institutional senior living in the urban core**
Cynthia Damar-Schnobb, Artellix, Canada
Isabella Vellegas, MGAC, Canada

- P03** **Creating a healthy hospital for the future: An enhanced framework and implementation toolkit to improve population health**
Helen Gilpin, Yvonne Parkes, Cheryl Riotto, New Hospital Programme, NHS England, UK
Philippa Dent, Helen Green, Aliko Ahmed, NHS England – East of England, UK

- P04** **Beyond treatment: Creating a holistic health ecosystem for children**
Lynne Wilson, Rachael Newbury, Parkin Architects, Canada

- P05** **The role of the built environment in supporting community renal programmes**
Sophie Hockin, NHS North East London, UK

- P06** **Prototyping the high-street integrated care hub (HICH): A reuse-first, ecosystem-based method for neighbourhood health infrastructure**
Jack Sardeson, Perkins&Will, UK

- P07** **Proven precedent and blueprint principles for neighbourhood health centres**
Bob Wills, Lianne Knotts, Medical Architecture, UK

- P08** **Reimagining care closer to home**
Cate Mentink, Lexica, member of WSP, UK

- P09** **Designing for social thickness: Community hospitals as hubs of shared celebration, local enterprise and neighbourhood care**
Jo Morrison, Calvium, UK



P10 **Glasgow's new front door – Parkhead Integrated Health and Care Hub**
 Richard Mann, Craig Booth, AECOM, UK; Andrew Baillie, NHS Greater Glasgow and Clyde, UK

P11 **Factors influencing sustainable implementation and scale-up of Cognitive Behavioural Therapy for Insomnia (CBT-I) in the perinatal community**
 Orly Atzmon, Monash University, Australia

Theme: Health planning and investment

P12 **Burn the masterplan: Rewriting the rules of health-led regeneration in Lancashire and beyond**
 Emma Ingham, Loxie, UK

P13 **Healing through design: The impact of spatial layout on patient recovery and staff efficiency in Saudi Arabian hospital wards**
 Ghaydaa Hemaidah, Asma Alyami, Zahra Alomani, Zahra Alali, Fatimah Almarhoon, Manar Albahrani, Imam Abdulrahman Bin Faisal University, Saudi Arabia

P14 **Standards, guidelines, and the spaces between: How the UK and Sweden shape hospital design**
 Lienelle Geldenhuis, White Arkitekter, UK
 Cristiana Caira, White Arkitekter, Sweden

P15 **Triaging fire risks: A framework for prioritising fire safety defect remediation across healthcare estates**
 Tim Roberts, Graeme Flint, Arup, UK

P16 **Designing for resilience, renewal and regeneration: The structural and civil engineering of Midland Metropolitan University Hospital**
 Suleyman Ekingen, Tom Leake, Curtins, UK; Jane Ho, Paul Niblett, HKS Architects, UK

P17 **Updated guideline for hospital evaluation in Norway with focus on pre-occupancy evaluation**
 Unni Dahl, Lilian Leistad, Sykehusbygg HF (Norwegian Hospital Construction Agency), Norway

P18 **How bricks, beds and bad design shape maternity outcomes**
 Anya Shah, Turner & Townsend, UK

P19 **Identifying opportunities and barriers to innovation in residential care building design: An Australian e-Delphi study**
 Anahita Sal Moslehian, Deakin University, Australia

P20 **Our roles in an age of AI and healthcare everywhere**
 Regina Kennedy, Lexica, member of WSP, UK

P21 **De-risking service change ahead of capital build**
 Samuel Rose, IMPOWER Consulting, UK

P22 **From two legacy hospitals to one future-ready campus: A case study in resilient transition planning at MMUH**
 Eli Moriarty, Evan Rutherford, Jason Mitchell, Health Care Relocations, Canada

P23 **The walls we build and the words that build them: Language as infrastructure's true architect**
 Emma Ingham, Loxie, UK

Theme: Intersection of clinical medicine and design

P24 **Light as medicine: Using spectrally specific and infrared illumination to regenerate health, sleep, and system resilience in healthcare design**
 Lorraine Calcott, it does Lighting, UK

P25 **Real lived experience: A radical new design philosophy for health and care**
 Chris Lawer, Umio, UK



P26 **A building as a beacon of hope and the power of cancer-fighting drugs – a case study**
 Sharon Cook, P+HS Architects, UK
 Ruth Plummer, Sir Bobby Robson Institute, UK

P27 **Transforming histopathology at Cambridge University Hospitals – design, delivery and impact**
 Julia Davies, NBBJ, UK
 Gabriel Franca, Lifecycle Consulting Services, UK
 James Mackenzie-Burrows, Hoare Lea, UK

P28 **Designing the future of medicines optimisation: A novel maturity assessment tool for next-generation hospitals**
 Francine de Stoppelaar, Meera Ruparelia, Laurence Cobo, New Hospital Programme (Health Delivery Partnership), UK
 Joshua Igbineweka, New Hospital Programme (NHS England), UK

P29 **The hospital of the future: Sustainable, innovative, and focused on new care needs**
 Giulio Felli, CSPE, Italy; Andrea Vannucci, University of Siena, Italy

P30 **Designing for flow and meaning: The Misericordia Community Hospital Emergency Department Redevelopment**
 Jan Kroman, DIALOG, Canada

P31 **Senses and wellbeing: How design for the senses can improve user wellbeing**
 Fatemeh Tohidifar, University of Tehran, Iran

P32 **Student contributions to a better understanding of supportive environments for patient and family-centred care**

Liesbeth van Heel, Erasmus UMC, Netherlands

Gina Mulholland, Nika Wolswijk, Deirdre Casella, Rotterdam University of Applied Sciences, Netherlands

P33 **Empathy-driven hospital design: Sensitising architecture students to the experience of patients and staff**

Birgit Dietz, Sanziana Maximeasa, TU Munich, Germany

P34 **Building safer hospitals – BEIPI (Built Environment Infection Prevention Initiative)**

Manjula Meda, Frimley Health NHS FT, UK; John Bodley-Scott, Sisk, UK



Theme: Science, technology and digital transformation

P35 **Using virtual reality mock-ups as a pre-occupancy evaluation tool for the design of a seniors' emergency medicine centre**

Anna Nowacki, University of Toronto, Canada

Jaspreet Sethi, OCADU, Canada

P36 **Virtual bedspace – the changing ecosystem of healing spaces**

Kristina Richter Adamson, Brno

University of Technology, Czech Republic

P37 **Healthcare masterplan: A digitally integrated, AI-enhanced healthcare system**

Hieronimus Nickl, Nickl & Partner, Germany

P38 **Diagnosing the hidden hazards: Fire safety risks in modular healthcare construction**

Tim Roberts, Neil Hitchen, Arup, UK

P39 **The art of speaking digital**

Anni Feng, Hoare Lea, UK

Maureen McGinn, NHS Lanarkshire, UK

P40 **Designing a physical hub for digital health: The Sanford Virtual Care Center's integrated model for improving rural healthcare access and outcomes**

Deborah Wingler, Michelle Jutt, Nicole Czapek, HKS, USA

P41 **Cybernetic field hospitals: Agile digital infrastructures for post-crisis acute care**

Habban Ali, Reddy Architecture and Urbanism, Ireland

Evangelia Chrysikou, University College London, UK

Theme: Climate-smart healthcare

- P42** Solving the net-zero conundrum: How clinicians and engineers worked together to reduce energy consumption and emissions while improving patient outcomes
Mike Dunne, Stantec, UK
- P43** Healthcare at the forefront: Lessons from a net-zero journey
Nekisha McGill, Susana Erpestad, HDR, USA
- P44** Regenerative hospital of the future
Nathan Shelley, AECOM, UK
- P45** Operational energy and infrastructure risk in NHS hospitals: A national assessment using open data
Montgomery Jackson, Ruchi Choudhary, University of Cambridge, UK
- P46** The methodology behind the UK's first building approved under the NHS Net Zero Building Standard
Gareth Banks, AHR, UK
Kit Knowles, Ecospheric, UK
Peter Dodd, Integrated Health Projects, UK
Adam Hope, Countess of Chester Hospital NHS Foundation Trust, UK

Theme: Art and architecture

- P47** Evaluation and implementation of environmental visual information for an improved patient experience at the Oxford Eye Hospital
Jonathan Brett, Oxford University Hospitals NHS Foundation Trust, UK
- P48** Co-producing healing spaces: A case study of patient-led art in neurorehabilitation wards
Jo Knox, Carmel Woolmington, Barts Health NHS Trust, UK
- P49** Children's healthcare placemaking – creating a representative and welcoming space for a public health system unit in Brazil
Victor Druciaki Dutra, PUCRS, Brazil



Theme: Tertiary care

- P50** **Designing for dignity: Enhancing end-of-life care in Irish hospitals**
Alice Anderson, Lucy Andrews, Irish Hospice Foundation, Ireland

- P51** **Mental rooms: Functional and architectural redevelopment project for spaces aimed at reducing physical restraints in the psychiatry wards of ASST Saint Paolo and Carlo of Milan**
Giulio Ceppi, Total Tool, Italy
Alessandro Grecchi, ASST Santi Paolo e Carlo, Italy

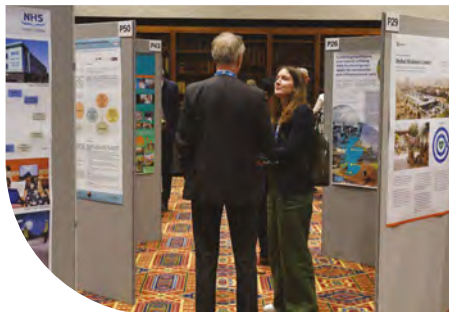
- P52** **The power of perspectives: Harnessing patient, carer, clinical and technical voices to shape future children’s cancer services**
Hannah Brewster, ADP Architecture, UK
Louisa Williams, Art in Site, UK
Trish Gray, Evelina London Children’s Hospital, UK

- P53** **Designing delivery: Addressing the US maternal health crisis through design**
Kim Holden, Doula x Design; Yale University, USA

Theme: Workforce design

- P54** **The future of healthcare education – shared goals, shared spaces: Strategic collaboration between hospitals and universities**
Leanne Guy, Hassell, Australia

- P55** **A collaborative staff-led design approach to create healthcare spaces that set a precedent for staff wellbeing**
Gareth Banks, AHR, UK
Pippa Scott-Heale, Countess of Chester Hospital, UK



A DIGITAL NURSE CALL SYSTEM DESIGNED FOR TODAY'S CHALLENGES AND TOMORROW'S OPPORTUNITIES

SSG is using **innovative digital technologies** to enhance Nurse Call Systems. Digital Nurse Call can anticipate patient needs, support overstretched staff, and create a more efficient environment for patient care.

**Working towards Hospital 2.0
by delivering silent wards and
medical device integration.**



Book your visit to the
Tech Centre to see SSG's

DIGITAL NURSE CALL ECOSYSTEM IN ACTION

Or visit our website for more details
www.staticsystems.co.uk



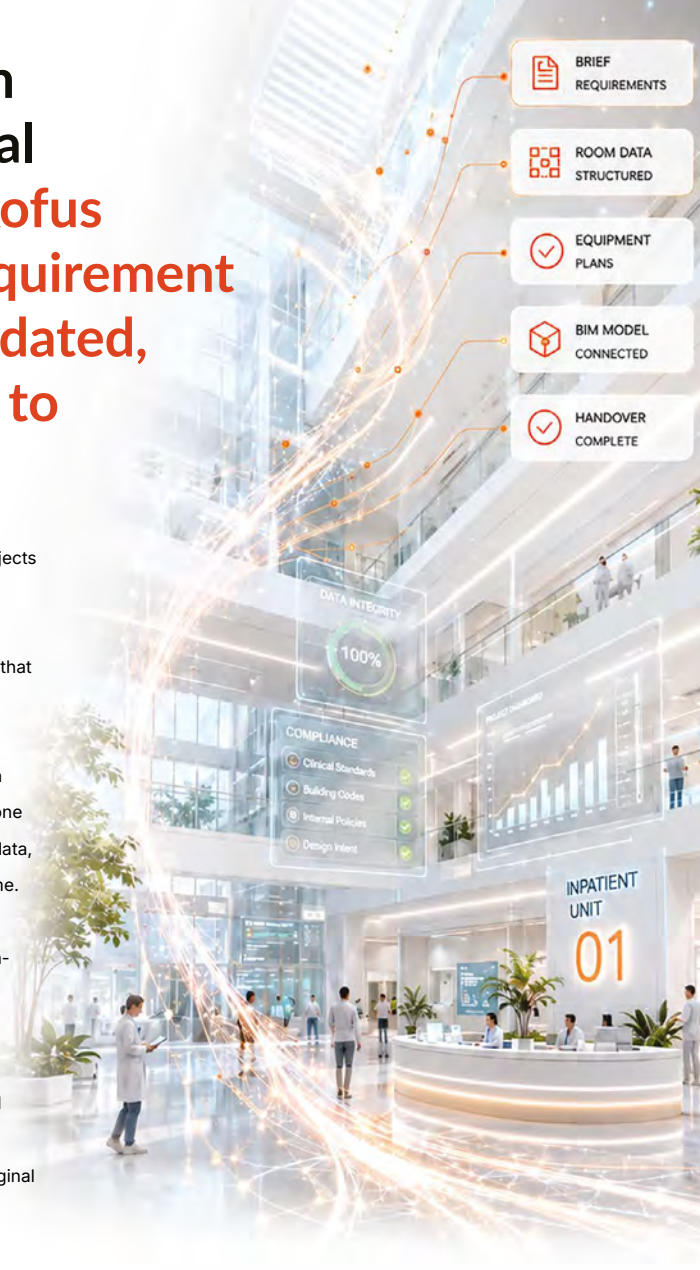
From first room schedule to final handover – dRofus keeps every requirement structured, validated, and connected to your design.

The data foundation of most healthcare projects is flawed. A clinical requirement buried in a spreadsheet. A Room Data Sheet that drifts from what was designed. An equipment list that nobody owns.

dRofus replaces fragmented documentation with a single, structured source of truth — one that connects briefing requirements, room data, equipment plans, and BIM models in real time. Every stakeholder works from the same live dataset. Every change is tracked. Every non-compliance is flagged before it becomes a costly correction.

For hospital project teams managing clinical complexity, long timelines, and multi-disciplinary accountability, that is not a marginal improvement. It is how you de-risk delivery.

-  BRIEF REQUIREMENTS
-  ROOM DATA STRUCTURED
-  EQUIPMENT PLANS
-  BIM MODEL CONNECTED
-  HANDOVER COMPLETE



See how dRofus structures healthcare project data from brief to handover.
Visit us at European Healthcare Design 2026

**Proud Gold Design Leaders Sponsor —
European Healthcare Design 2026**



Global Health Infrastructure Workshop + Study Tour



Invitation only | Weds 17 June

Workshop: 08.30–14.30 at the London Institute of Healthcare Engineering

Springfield Village Study Tour: 14.30–17.30

The Global Health Infrastructure Workshop and Study Tour is an invitation-only forum bringing together senior international leaders responsible for the planning, design, procurement, financing and delivery of major healthcare infrastructure programmes. Convened as part of Congress 2026, the workshop provides a unique opportunity for peer-level exchange between national health infrastructure agencies, government bodies, health authorities and major healthcare providers from across Europe, Asia-Pacific, Africa and the Americas.

Designed as a collaborative working forum rather than a traditional conference session, the workshop focuses on the strategic challenges and opportunities shaping healthcare infrastructure delivery worldwide. Participants will share experiences from large-scale capital programmes, explore emerging models of governance and delivery, and identify opportunities for greater international collaboration and shared learning.

The programme is structured around three interconnected sessions. The first brings together international perspectives from leading health infrastructure programmes, offering strategic insights into current priorities, transformation initiatives, lessons learned and the most pressing challenges facing healthcare systems. Through facilitated discussion, participants will examine common tensions experienced across jurisdictions, including balancing national consistency with local flexibility, delivery speed with effective governance, standardisation with adaptability, resilience with affordability, and sustainability ambitions with financial realities.

The second session adopts a workshop-based methodology, with participants working in facilitated international groups to explore system-level challenges in greater depth. Discussions will focus on programme governance, delivery at scale, digital transformation, standardisation and modular approaches, workforce and supply chain resilience, and the practical delivery of sustainable and net-zero healthcare infrastructure. Using a structured framework centred on aspirations, barriers, enablers and actions, participants will work together to develop practical recommendations and transferable insights.

The final session synthesises the outcomes of the workshop, identifying cross-cutting themes, recurring challenges and areas of emerging consensus. It will also highlight priority issues where greater collaboration, knowledge exchange and collective leadership can accelerate progress across global health infrastructure systems.

The day concludes with a study tour to Springfield Village, in Tooting, southwest London, offering participants a practical perspective on contemporary healthcare infrastructure delivery in the UK and providing further opportunities for discussion and networking among international peers.

Welcome address:



Simon Corben

Director and head of profession, NHS Estates, NHS England, UK

Facilitated by:



Jeremy Myerson

Prof emeritus, Helen Hamlyn Centre for Design, Royal College of Art, UK

Chaired by:



Sunand Prasad

Programme director, European Healthcare Design, UK



Integrated Health Projects by



Crown Commercial Service

Framework Contractor

85% Repeat appointment projects



NHS
New Hospital Programme

H2A
Hospital 2.0 Alliance
Member

Total value of these projects



£4.49bn



101 NHS and Local Authority Clients

301 Projects



Jason Gibbings 07834 765 915

jason.gibbings@vinci-building.co.uk

Stuart McArthur 07818 076 928

stuart.mcarthur@srm.com





Recognising design excellence in the healthcare environment

Lead Awards Partner



Integrated Health Projects by
VINEY  Sir Robert
M^{ALPINE}

The European Healthcare Design (EHD) 2026 Awards celebrate the finest in global healthcare design. They recognise professional and research excellence in the design of healthcare environments, not only in Europe but also around the world.

The Awards aim to have a significant influence on the creation of healthcare environments that promote health and wellness, embed quality improvement, and support the delivery of treatment and care in an accessible, sustainable and equitable way.

Organised by SALUS Global Knowledge Exchange and Architects for Health, the Awards are an integral feature of the 12th European Healthcare Design 2026 Congress, contributing towards the development of knowledge and standards in the design of healthcare environments and infrastructure globally.

Comprising 11 categories across primary, community, secondary and tertiary levels of international healthcare provision and infrastructure, the Awards are presented at an illustrious ceremony during the final session of the Congress on Tuesday 16 June and streamed online for delegates to view remotely around the world.

Recipients of the Awards will be multidisciplinary project teams that have demonstrated outstanding vision, leadership and knowledge in the design, development and implementation of projects that have positively transformed the delivery and experience of healthcare for the patients and communities they serve.



The Susan Francis Design Champion Award

The signature prize of the European Healthcare Design Awards, the Susan Francis Design Champion Award is presented to a healthcare leader who has championed and advocated the value of design, demonstrating visionary leadership and lifelong dedication to delivering excellence and setting new standards in design quality in the healthcare environment.

The award also honours the legacy of Susan Francis, co-creator of the European Healthcare Design Congress, who sadly passed away following illness in April 2017.



Awards poster gallery

Design for large-scale healthcare infrastructure

- A01 General Hospital Diest, Belgium
- A02 New Footscray Hospital, Australia
- A03 Shenzhen Children’s Hospital Longhua Campus, China
- A04 Viljandi Hospital & Health Centre, Estonia

Awards Category Partner



Design for small to medium-scale healthcare infrastructure

- A05 Expertise Centre ‘t Spant – Ipse de Bruggen, Netherlands
- A06 Parkhead Hub, UK
- A07 Rob Burrow Centre for Motor Neurone Disease, UK
- A08 Te Hōpua Whakahaoua – Taranaki Cancer Centre, New Zealand
- A09 Kyabirwa Surgical Center, Uganda *(Special mention)*

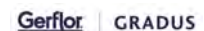
Awards Category Partner



Future healthcare design (unbuilt projects)

- A10 Great Ormond Street Healthy Hospital Street, UK
- A11 Hillsborough Acute Mental Health & Addictions Centre and Transitional Housing, Canada
- A12 Houston Methodist Hospital, Centennial Tower, USA
- A13 Hospital 2.0 System, UK

Awards Category Partner



Mental health design

- A14 Building the Next Generation of Acute Inpatient Psychiatric Care, UK
- A15 Extended Soul Space, Austria
- A16 Noarlunga Hospital Mental Health Rehabilitation Unit, Australia
- A17 The Brook for Devon Partnership NHS Trust, UK

Awards Category Partner



Design for neighbourhood health

- A18 Anishnawbe Health Toronto Indigenous Community Health Centre, Canada
- A19 Harold Moody Health Centre, UK
- A20 New Betio Hospital (Stage 1), Kiribati
- A21 Parkhead Hub, UK



Design for health and life sciences

- A22 Life and Mind Building, University of Oxford, UK
- A23 UNSW Health Translation Hub, Australia
- A24 Sydney Children's Hospital Stage 1 & Minderoo Children's Comprehensive Cancer Centre, Australia

Awards Category Partner



Design for adaptation and transformation

- A25 Cober Valley Health, Helston Gateway, UK
- A26 Mayo Clinic, Bed Tower Hospital Expansion, USA
- A27 Mother-child-centre Henrike, Germany

Interior design and the arts

- A28 eARTH: inclusive trip in Salus Pueri Children's Hospital, Italy
- A29 Peninsula University Hospital, Australia
- A30 Silverwood, UK
- A31 Sydney Children's Hospital Stage 1 & Minderoo Children's Comprehensive Cancer Centre, Australia
- A32 The Golden Tea Room: Integrating art, history and healing in radiation therapy, Japan (*Special mention*)
- A33 Community Diagnostic Centre – Mile End Hospital, UK (*Special mention*)

Excellence in healthcare planning

- A34 Al Ansar Madinah, Saudi Arabia
- A35 New Betio Hospital (Stage 1), Kiribati
- A36 New Footscray Hospital, Australia
- A37 NSM, New Hospital buildings, Sweden

Awards Category Partner



Healthcare interiors product

- A38 COVE™ Clinical Observation Vertical Exam
- A39 SureProtect Artworx

Design research for healthcare environments

- A41 Anatomy of change: Rethinking healthcare learning environments
 Authored by Daniel Davis, Hassell, USA and Leanne Guy, Hassell, Australia
- A42 Optimising the inpatient room: A performance-based reassessment of hospital room typologies
 Authored by Antoine Buisseret, Lemay and Christine Mimeault, CHU de Québec – Université Laval, Canada

Awards Category Partner





Future-ready **ceiling hoist solutions**

- ✓ Scalable digital solutions designed for long-term adaptability
- ✓ Supports evolving care models and changing patient demands
- ✓ Aligns with smart hospital and sustainability strategies
- ✓ Improved efficiency and lifecycle value

www.guldmann.com
E-mail: info_uk@guldmann.com
Tel: +44 1173 790 082

| Time to care |



Guldmann™



Awards Category Partner

Design for large-scale healthcare infrastructure

Guldmann™

This award recognises excellence in the design, planning and delivery of major healthcare infrastructure projects that demonstrate outstanding architectural vision, clinical functionality and long-term strategic value. The category celebrates projects that advance models of care, promote sustainable and resilient estate strategies, and deliver exceptional patient, staff and community outcomes.

Judging committee



Lead judge

Kate Copeland,
Australian Health
Design Council, Australia

Panel judges

Matthew Holmes, Jacobs, Australia

Paul Bell, Ryder Architecture, UK

Shortlist

General Hospital Diest, Belgium

Commissioned by General Hospital Diest
Designed by Archipelago in collaboration with
Gortemaker Algra Feenstra architects



New Footscray Hospital, Australia

Delivered by Plenary Health consortium, with
VIDA Health and Western Health; Developed by
COX Architecture + Billard Leece Partnership



Shenzhen Children's Hospital Longhua Campus, China

Commissioned by Shenzhen Municipal Bureau of
Construction and Public Works; Designed by Nickl
& Partner Architectural Design Consulting (Beijing)
& Zhubo Design Co.; Developed by Shenzhen
Municipal Government Engineering & Construction
Bureau; Constructed by Shanghai Baoye Group Co.



Viljandi Hospital & Health Centre, Estonia

Commissioned by Riigi Kinnisvara Aktsiaselts
Designed by Planho + Bakpak + Dagopen





Design for small to medium-scale healthcare infrastructure

An outstanding healthcare project in a community, primary or tertiary care setting that demonstrates high levels of sustainability and urban integration, transforming the quality of care services in an accessible location, and supporting the integrated needs of staff, patients and the community.

Judging committee



Lead judge

Nicola Bertrand,
Asklepios, Germany

Panel judges

Stephanie Costelloe, BVN, Australia

Tushar Gupta, Stantec, USA

Shortlist

Expertise Centre 't Spant – Ipse de Bruggen,
Netherlands

Commissioned by Ipse de Bruggen

Designed by Gortemaker Algra Feenstra architects



Parkhead Hub, UK

Commissioned by NHS Greater Glasgow & Clyde

Designed by Hoskins Architects and AECOM



Rob Burrow Centre for Motor Neurone
Disease, UK

Commissioned by Leeds Teaching Hospitals NHS
Trust

Designed by Corstorphine & Wright Architects



Te Hōpua Whakahaora – Taranaki Cancer
Centre, New Zealand

Commissioned by Te Whatu Ora – Health New
Zealand

Designed by Chow:Hill





Awards Category Partner



Future healthcare design (unbuilt projects)

Recognising visionary, unbuilt healthcare infrastructure projects that explore innovative responses to emerging health, social and environmental challenges. It celebrates speculative, conceptual or planned schemes that reimagine future models of care, integrate advanced technologies, and propose resilient, adaptable and sustainable healthcare environments.

Judging committee



Lead judge

Cliff Harvey,
Grand River Hospital/St. Mary's
General Hospital, Canada

Panel judges

Bill Hercules, WJH Health, USA

Benjamin Bassin,
Blue Cottage of CannonDesign, USA

Shortlist

Great Ormond Street Healthy Hospital Street, UK

Commissioned by Great Ormond Street Children's Hospital
Designed by LDA Design



Hillsborough Acute Mental Health & Addictions Centre and Transitional Housing, Canada

Commissioned by Department of Health and Wellness, Government of Prince Edward Island
Designed by HDR Architecture Associates, in association with Sable ARC



Houston Methodist Hospital, Centennial Tower, USA

Commissioned by Houston Methodist
Designed by Stantec



Hospital 2.0 System, UK New Hospital Programme



HEALTHCARE INTERIORS

RESILIENT BY
DESIGN

Flooring and Wall Covering Solutions for Health and Wellbeing

We're passionate about delivering healthcare solutions that are designed to support safe, adaptable and enduring spaces, helping hospitals and care settings to respond, recover and renew. Our world class innovations create calm, clean, comfortable, and welcoming interiors for all patients, staff and visitors. Our products provide unrivalled levels of chemical and stain resistance and enhance building longevity. Future-proof your projects today with our cutting-edge solutions, free site surveys available now for new clients.

Mipolam Symbioz™ Flooring & SureProtect Artworx® Wall Cladding



Safe



Calm



Welcoming



Clean

Holistic Surface Protection for all Healthcare Environments

Contact us for further information

+44 (0) 1625 428 922

gerflor.co.uk | contractuk@gerflor.com

gradus.com | imail@gradus.com

Gerflor

GRADUS



Awards Category Partner




Mental health design

Recognising excellence in the design, planning and delivery of environments that support mental healthcare treatment, recovery and wellbeing. It celebrates schemes that demonstrate a deep understanding of therapeutic and trauma-informed design, person-centred care and clinical safety. The category honours projects that create safe, dignified and restorative spaces, balancing clinical and security requirements with warmth, autonomy, access to nature and a sense of hope.

Judging committee



Lead judge

Beatrice Fraenkel,
Design in Mental Health
Network, UK

Panel judges

Danny Gibson, MJ Medical, UK

Tara Veldman, Billard Leece Partnership, Australia

Shortlist

Building the Next Generation of Acute Inpatient Psychiatric Care, UK

Commissioned by Nightingale Hospital
Designed by GB Bespoke Joinery



Extended Soul Space

Commissioned by Vienna Hospital Association
Designed by AWZT – Albert Wimmer Architects



Noarlunga Hospital Mental Health Rehabilitation Unit, Australia

Commissioned by SA Health
Designed by Wiltshire Swain + GHD Design



The Brook for Devon Partnership NHS Trust, UK

Design and delivered by Kier Construction and Grainge Architects



We redefine what's possible.

At Jacobs, we're reimagining approaches to create and sustain well-functioning, thriving and resilient health systems and contributing to personal, societal and economic well-being.

We're driven to overcome obstacles and to create new opportunities that build a better world — taking your complex planning, design and delivery challenges and solving them through innovation and collaborative solutions.

Always pushing beyond.



Follow us @JacobsConnects | jacobs.com/health



Jacobs

Challenging today.
Reinventing tomorrow.



Awards Category Partner

HOARE LEA (H.)
A TETRA TECH COMPANY

Design for neighbourhood health

Recognising healthcare developments that actively promote population health, wellness and healthy living beyond traditional hospital settings. It celebrates schemes that provide a catalyst for healthier neighbourhoods and more equitable communities by integrating with the public realm, landscaping and green infrastructure, active travel corridors, housing and regeneration projects that embed health into daily life. The category honours design approaches that contribute to environmental quality, support healthy behaviours and early intervention, and strengthen social connection.

Judging committee



Lead judge

John Cooper,
JCA, UK

Panel judges

Charlotte Ruben, White Arkitekter, Sweden

Ruairi Reeves, Medical Architecture, UK

Shortlist

Anishnawbe Health Toronto Indigenous Community Health Centre, Canada
 Commissioned by Anishnawbe Health Toronto
 Designed by Stantec Architecture with Two Row Architect



Harold Moody Health Centre, UK
 Commissioned by London Borough of Southwark and Notting Hill Genesis
 Designed by Morris+Company



New Betio Hospital (Stage 1), Kiribati
 Commissioned by Ministry of Health and Medical Services (Kiribati)
 Designed by Jacobs



Parkhead Hub, UK
 Commissioned by NHS Greater Glasgow & Clyde
 Designed by Hoskins Architects and AECOM



Ryder

We're more than an architectural practice.

Our goal is simple – to improve the quality of the world around us and, in doing so, improve people's lives.



Everything architecture

ryderarchitecture.com

✉ Ryder1953

[in](https://www.linkedin.com/company/ryder-architecture) [Ryder Architecture](https://www.linkedin.com/company/ryder-architecture)

[@ryderarchitecture](https://www.instagram.com/ryderarchitecture)

Newcastle London Glasgow Liverpool Manchester Bristol Hong Kong Vancouver



Design for health and life sciences



Recognising excellence in the design, planning and delivery of infrastructure that supports health and life sciences research, innovation and translation into clinical practice. The category honours schemes that demonstrate outstanding technical performance, flexibility and future-readiness, while fostering collaboration, discovery and the advancement of human health.

Judging committee



Lead judge
Peter Ward,
Abzyme, UK

Panel judges

Mohammed Ayoub, HDR, USA
Richard Mann, AECOM, UK

Shortlist

Life and Mind Building, University of Oxford, UK
Commissioned by Life and Mind Building Oxford
Designed by NBBJ



UNSW Health Translation Hub, Australia
Commissioned by UNSW Sydney + Plenary Group
Designed by Architectus

**Sydney Children's Hospital Stage I & Minderoo
Children's Comprehensive Cancer Centre,
Australia**

Commissioned by NSW Health (Health
Infrastructure and Sydney Children's Hospitals
Network) in collaboration with Children's Cancer
Institute
Designed by Billard Leece Partnership





Design for adaptation and transformation

This award recognises excellence in the adaptation, reuse and transformation of existing healthcare and non-healthcare infrastructure to meet changing models of care, evolving clinical needs and future system demands. It celebrates projects that demonstrate innovative approaches to refurbishment, repurposing, expansion and reconfiguration, delivering renewed value from existing assets while improving quality, efficiency and user experience.

Judging committee



Lead judge

Jim Chapman,
Manchester School
of Architecture, UK

Panel judges

Christine Chadwick, Archus Canada, Canada

Christopher Shaw, past-chair, Architects for Health, UK

Shortlist

Cober Valley Health, Helston Gateway, UK

Commissioned by South Kerrier Alliance CIC

Designed by MJ Medical



Mayo Clinic, Bed Tower Hospital Expansion, USA

Commissioned by Mayo Clinic

Designed by Perkins&Will



Mother-child-centre Henrike, Germany

Commissioned by Bauherrengemeinschaft:

Diakovere + Hannoversche Kinderheilstalt

Stiftung des privaten Rechts

Designed by AEP Architekten Eggert Generalplaner





Interior design and the arts

This award recognises excellence in the integration of interior design and the arts within healthcare environments to enhance wellbeing, support healing and enrich the human experience of care. It celebrates projects that demonstrate how thoughtful materiality, colour, lighting, furniture, artwork, cultural expression and sensory design can create welcoming, inclusive and restorative spaces for patients, staff and visitors.

Judging committee



Lead judge

Ruth Charity,
Oxford University Hospitals
NHS Foundation Trust, UK

Panel judges

Mohammed UI-Haq, HLM Architects, UK
Femke Feenstra, Gortemaker Algra Feenstra
architects, Netherlands

Shortlist

eARTH: Inclusive trip in Salus Pueri Children's Hospital, Italy

Commissioned by Fondazione Salus Pueri Onlus
Designed by DU IT



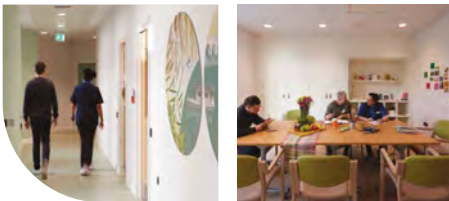
Peninsula University Hospital, Australia

Commissioned by Exemplar Health
Designed by Bates Smart and Architectus



Silverwood, UK

Commissioned by Surrey and Borders Partnership
NHS Foundation Trust
Designed by Arcadis



Sydney Children's Hospital Stage 1 & Minderoo Children's Comprehensive Cancer Centre, Australia

Commissioned by NSW Health (Health Infrastructure and Sydney Children's Hospitals Network)
Designed by Billard Leece Partnership





Awards Category Partner



Excellence in healthcare planning

This award recognises outstanding healthcare planning that enables more effective, efficient, and accessible clinical service delivery. It celebrates projects and strategic plans that introduce new models of care, leverage technology, and improve access, capacity, flow, and flexibility across healthcare systems.

Judging committee



Lead judge

Rhonda Kerr,
Australasian Association
of Health Planners, Australia

Panel judges

Jaime Bishop, Architects for Health, UK

Jonathan Erskine, European Health
Property Network, UK

Shortlist

Al Ansar Madinah, Saudi Arabia

Commissioned by Ministry of Health KSA
Developed by RSO Architecture



New Betio Hospital (Stage 1), Kiribati

Commissioned by Ministry of Health and Medical
Services (Kiribati)
Led and developed by Jacobs



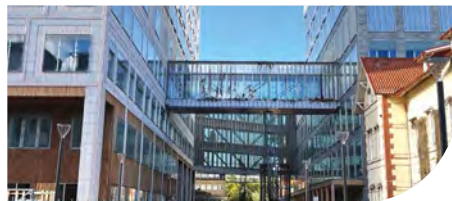
New Footscray Hospital, Australia

Delivered by Plenary Health consortium, with VIDA
Health and Western Health
Developed by COX Architecture + Billard Leece
Partnership



NSM, New Hospital buildings, Sweden

Commissioned by Region Skåne
Developed by White arkitekter





Healthcare interiors product

Recognising excellence in the design and innovation of healthcare interior products, including fixtures and furnishings created specifically for clinical and care environments. It celebrates products that enhance safety, comfort, dignity, functionality, and wellbeing for patients, residents, visitors, and staff, while meeting the complex demands of infection control, durability, sustainability, and inclusive design.

Judging committee



Lead judge

Lara Kaiser,
Perkins&Will, Brazil

Panel judges

Kate Bradley, MJ Medical, UK

Shortlist

COVE™ Clinical Observation Vertical Exam

Designed by HKS and developed in partnership with DIRTT Construction Systems



SureProtect Artworx

Designed and developed by Gradus – A Gerflor Company





Creating therapeutic environments
that promote wellbeing & recovery

medicalarchitecture.com

Medical
Architecture



Awards Category Partner

Design research for healthcare environments

This award recognises outstanding research that advances knowledge, innovation, and evidence-based practice in healthcare design and infrastructure. It celebrates studies that deepen understanding of how the built environment, technology, spatial planning, and user-centred design can improve health outcomes, enhance patient and staff experience, support wellbeing, and increase operational efficiency across all healthcare settings.

Judging committee



Lead judge

Göran Lindahl, Chalmers University of Technology, Centre for Healthcare Architecture, Sweden

Panel judges

Deborah Wingler, HKS, USA

Grant Mills, University College London, UK

Shortlist

Anatomy of change: Rethinking healthcare learning environments

Authored by Daniel Davis, Hassell, USA and Leanne Guy, Hassell, Australia

Optimising the inpatient room: A performance-based reassessment of hospital room typologies

Authored by Antoine Buisseret, Lemay and Christine Mimeault, CHU de Québec – Université Laval, Canada



Shaping the Future of International Healthcare Architecture

LLEWELYN
DAVIES

Llewelyn Davies - one of the world's leading healthcare architects - is pioneering a new era of **human-centric design, medical excellence and environmental responsibility.**

From the Middle East, the Channel Islands, Southern Europe and the Caribbean, our approach focuses on enhanced patient and staff well-being, and flexibility within a 'smart hospital' environment.

Partner with us to create a smarter, greener and more human future in healthcare architecture.

To continue the conversation contact:

Robert Etchell
r.etchell@ldavies.com

Moritz Spellenberg
m.spellenberg@ldavies.com

www.ldavies.com

Jersey NHFP Acute Hospital



Construction site of SNF General Hospital of Sparta, Greece



Jawaher Boston Medical District, Sharjah, UAE - In collaboration with RRPBW



Welcome Drinks Reception

Monday 15 June, 18.00–19.00 | Britten Room

The Welcome Drinks Reception takes place immediately after the close of the first day's proceedings on the evening of Monday 15 June, in the Britten Room, offering a fantastic chance to network and unwind.

The European Healthcare Design 2026 exhibition will also be open during the evening.

The Welcome Drinks Reception will be hosted by Architects for Health, which has co-organised the Congress since its inception in 2015. Since 1992, Architects for Health has been a forum for sharing best practice, knowledge, innovation and thought leadership relating across the healthcare built environment. Today, its membership is open to all who share its aims, not just architects. Its work reaches across the UK and internationally in equal measure: it is a world leader in promoting healthcare design and it proudly partners with SALUS Global Knowledge Exchange to present the Congress.

Attendance at the Welcome Drinks Reception is included within your Congress ticket.

Hosted by



Supported by



Garden Party

Tuesday 16 June, 18.30–22.00

College Gardens, Westminster Abbey

Supported by



Guests are warmly invited to the iconic Garden Party in the historic College Gardens of Westminster Abbey – believed to be the oldest continuously cultivated garden in England, with origins dating back more than 900 years. Nestled beside the Abbey and framed by medieval stone walls, this remarkable space offers a rare sense of calm in the heart of Westminster.

The evening will feature gourmet catering, fine refreshments, and live entertainment, creating a relaxed and celebratory atmosphere. Surrounded by living history and natural beauty, the Garden Party provides the perfect opportunity to connect, reflect, and celebrate with colleagues from across the EHD community.

The Garden Party is a separate ticketed event, which is fully booked. Only delegates with a ticket can attend.



BVN

Collective Creativity
to Design a Better Future.



Maitland Hospital, Australia



UMSC Quaternary Hospital, Malaysia

100 years of designing
environments that support
healing, connection
and community.



Canberra Hospital Expansion, Australia



Prince of Wales Hospital
Redevelopment, Australia

Study Tour 1: Nottingham (*rehabilitation and cancer care*)

We regret to inform delegates that Study Tour 1: Nottingham has been cancelled owing to issues beyond our control and will no longer be offered as part of the Congress programme. We apologise for any inconvenience and thank you for your understanding.

Study Tour 2: London (*community/mental health and cancer care*)

Departure point: QEII Centre, Storey's Gate

Date: 17 June

Time: 07.45–17.15

Springfield Village

Through its Better Communities Programme, South West London and St George's Mental Health NHS Trust is delivering a £280m self-funded capital investment to create inclusive mental health environments across Wandsworth, Richmond and Kingston. The aim is to create new landscapes that break mental health stigma to support access and create first-class environments for patients and staff.

In Wandsworth, Springfield University Hospital's 92-acre Victorian estate has been transformed into a 'Springfield Village', co-located with new mental health facilities. The village includes two mental health buildings, Trinity and Shaftesbury; a 32-acre public park; shops, cafes and a gym; more than 1200 new homes; and a new care home.



Oak Cancer Centre, Royal Marsden

Multiple EHD Award winner the Oak Cancer Centre is a new clinical care and research centre for the Royal Marsden NHS Foundation Trust's Sutton campus in South London. The Royal Marsden Hospital opened in 1851 as the world's first hospital dedicated to cancer diagnosis, treatment, research, and education.

The Oak Cancer Centre will enable clinicians to diagnose more cancers at an earlier stage and will help accelerate the development of new cancer treatments, offering hope for cancer patients worldwide. The building was also designed with the clear intent of enhancing patients' experiences while undergoing treatment.



Maggie's Royal Marsden

Opened in 2019 on the grounds of the Royal Marsden Hospital in Sutton, Maggie's at the Royal Marsden offers a vibrant architectural response to cancer care. Designed by Ab Rogers Design, the centre provides a welcoming place for people living with cancer, their families and friends – offering practical advice, emotional support and a calm environment away from the clinical setting.

The building is conceived as a cluster of interconnected volumes around a central courtyard. Clad in glazed terracotta tiles in graduating shades of red, the structure has a warm, handcrafted look that contrasts with the institutional character of the hospital nearby.



Designing future-ready healthcare systems and estates

We enable better health outcomes by shaping sustainable, future-ready healthcare systems designed around people and powered by digital. The real challenge isn't access to technology, but integrating it into planning from the outset. Starting at RIBA 0, we embed digital capability to unlock measurable value and help organisations do more with less as they adapt to change.

For over 25 years, we have helped healthcare providers to:

- Improve access, outcomes, and patient experience through smarter system design
- Understand and respond to demand, reducing bottlenecks and inefficiencies
- Maximise the value of estates and digital investment, avoiding stranded assets
- Create flexible systems that evolve, protecting against future uncertainty and policy change



Engineering.
Management.
Development.

TALK TO US

Explore how we can help you plan and deliver future-ready healthcare estates, contact kerry.harding@mottmac.com or hannah.lewis-jones@mottmac.com

Study Tour 3: London (*neighbourhood health*)

Departure point: QEII Centre, Storey's Gate

Date: 17 June Time: 08.30–17.15

Supported by



Harold Moody Heath Centre, South East London Integrated Care System

The Harold Moody Health Centre is a new civic neighbourhood health hub in Southwark. Designed to support integrated, community-centred care, the centre brings together GP practices, community health services, and an Early Years nursery within a single building, creating a collaborative ecosystem that improves access to care and addresses the wider determinants of health. Located on a new public square alongside housing, a library and community amenities, the centre functions as essential healthcare infrastructure and a welcoming social anchor for the neighbourhood. Its design promotes openness, accessibility and dignity, with clear wayfinding, generous circulation, abundant daylight and natural materials.



St George's Health and Wellbeing Hub

St George's Health and Wellbeing Hub is a neighbourhood health centre exemplifying a new model of integrated, community-based care. Designed for North East London Health and Care Partnership by Brydon Wood, the facility opened in November 2024 and brings together health, social care and voluntary sector services. The design comprises three interlocking blocks embracing a courtyard and arranged around clear access points and landscaped gardens, creating a welcoming, transparent environment. Generous circulation, daylight, terraces and a dementia-friendly communal garden support wellbeing, orientation and social interaction. A cafe, multi-purpose rooms and exhibition areas extend the building's role into everyday neighbourhood life, reinforcing its civic character.



St Paul's Way, Tower Hamlets

St Paul's Way in Tower Hamlets demonstrates a mature neighbourhood approach to health, education and community wellbeing. The campus brings together primary care, community health services, schools, housing, public spaces and voluntary sector activity within a single, connected place. The development reflects a long-term commitment to addressing the wider determinants of health by integrating health, education and social infrastructure around the needs of local residents. The neighbourhood benefits from strong partnerships between statutory agencies, community organisations and local people, creating a collaborative ecosystem that supports prevention, early intervention and community resilience.



Join the dots.

A smart hospital is one where systems work together, sharing data, coordinating workflows, turning information into action.

Austco builds the platform that makes it real. Nurse call, real-time location, clinical digital signage, integration, and hospital command centre.

One supplier.
One platform.
Bedside to building to enterprise.



Study Tour 4: Dorset (secondary care)

Departure point: QEII Centre, Storey's Gate

Date: 17 June

Time: 07.00–16.30

Royal Bournemouth Hospital

In support of its Five Year Strategic Plan, University Hospitals Dorset NHS Foundation Trust commissioned a masterplan to guide the long-term redevelopment of its estate across both acute hospital sites. This has culminated in a major new development at the Royal Bournemouth Hospital, representing a significant investment in the future of healthcare provision across Dorset.

The new facility has been designed around the patient journey – from appointment through diagnosis, treatment and aftercare. The hospital includes one of the largest emergency departments on the south coast, alongside an Urgent Treatment Centre and a dedicated imaging unit equipped with two CT scanners and three X-ray rooms. A new 30-bed Critical Care Unit provides spacious single bedrooms that enhance patient privacy, reduce infection risk, and create a more supportive environment for patients and staff.

Following its work with the Trust to develop the vision and masterplan, Arcadis was appointed as part of the Integrated Healthcare Projects team under the ProCure22 (P22) framework to deliver the project.

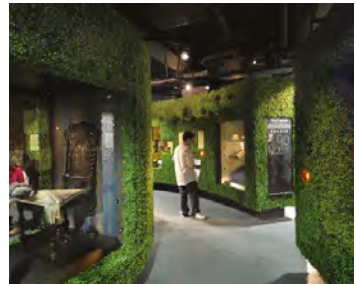


Florence Nightingale Museum – Healing Spaces Exhibition, London

Located at St Thomas' Hospital, the Florence Nightingale Museum celebrates the life, work and legacy of Florence Nightingale, whose pioneering approach to nursing, education and healthcare reform transformed healthcare around the world. The museum's collections include objects connected to Nightingale and generations of nurses trained at the Nightingale Training School, preserving a rich history of innovation and care.

Visitors will experience 'Healing Spaces: Healthcare Design Past, Present and Future', a special exhibition exploring the relationship between healthcare environments and wellbeing.

From Nightingale's groundbreaking ideas on hospital design to today's evidence-based approaches to healing environments, the exhibition highlights how architecture, design and place can influence patient outcomes, staff wellbeing and the overall quality of care. The exhibition offers valuable insights into the continuing importance of designing healthcare spaces that support healing, dignity and human-centred care.



HEALTH IS CREATED IN NEIGHBOURHOODS



Connected people. Thriving communities. Better outcomes.



- Health & care
- Community & civic life
- Wider determinants of health
- Regeneration & investment
- Enablers

WHAT WE HELP ORGANISATIONS DO

 <p>Activate neighbourhood assets</p>	 <p>Design prevention-led models</p>	 <p>Build cross-sector partnerships</p>	 <p>Connect systems around place</p>	 <p>Develop sustainable operating models</p>	 <p>Measure social & system impact</p>
--	--	---	--	--	---



We believe in learning by doing. Visit our website to explore 40 years of practical placemaking, regeneration & integrated neighbourhood health development



Contact

Marc Sansom,
Managing director
marc@salus.global

Dr Liz Paslawsky,
Executive chair

Andrew Sansom,
Editorial director
andrewsansom@salus.global

Laura Stuart,
Head of marketing and
communications
laura@salus.global

Krishna Mistry,
Operations and
marketing executive
krishna@salus.global

Russell Shipton,
Business development consultant
russell@salus.global

salus.global
europeanhealthcaredesign.eu
healthycitydesign.global

SALUS Global Knowledge Exchange

SALUS is an entrepreneurial global media, research, publishing, events and training organisation with a vision to improve human and planetary health through the global exchange of knowledge.

Our mission is to create, share and disseminate knowledge about the relationship between human health and the natural, built and social environments. We view the two great challenges of our age – the need to create and improve human health at the same time as protecting the health of the planet in a changing climate – as inextricably linked. We execute our mission through an integrated mix of knowledge-based activities including:

European Healthcare Design Congress: Launched in 2015, the Congress brings together 1,000+ interdisciplinary researchers and practitioners, in person and virtually, from the fields of health system and service design, technology and infrastructure. The Congress is widely recognised as a global industry leader.

Future Health 2050 International Symposiums: Our programme of one-day international symposiums provide a deep dive into a range of specialist themes. Previous symposiums have included: Cancer Care Design International; Sustainable Healthcare Design; and Health Policy, Planning and Investment.

Healthy City Design International Congress: Launched in 2017, the Congress brings together leading researchers, practitioners, investors, city leaders, community activists and policy thinkers from across the fields of urban planning, public health, housing, real estate, transport, education, healthcare and sustainable development. Following six years in London, the Congress now moves between different UK cities every two years, partnering with the host city. In 2023 and 2024, it was held in Liverpool at the Royal College of Physicians' northern home, The Spine. Last year and this year, it will be held at Lowry, MediaCity in Salford, Greater Manchester, on 20-21 October.

EHD and HCD LIVE: Making the virtual experience richer and more entertaining, EHD and HCD LIVE enable talks and content from our events and webinars to be live streamed and made available on demand for audiences to access anywhere around the world, making knowledge on designing for human and planetary health more accessible.

The SALUS journal and online community: A resource providing a digital platform for publishing, mapping and archiving research, policy and practice in the field of designing for human and planetary health. In eight years, SALUS has published more than 7500 articles and abridged research papers, and 4000 hours of video talks and posters.

Research advisory: In collaboration with its global network of researchers, practitioners and policy thinkers, SALUS's independent research advisory supports city planning authorities and national and local health systems to develop their future thinking and strategy at the intersection of design and planning for health, wellbeing and sustainable development.

Equipment Capital Planning, Advisory and Procurement



**MTS Health is the UK's leading provider of Capital Planning
Equipment Asset Management, Advisory and Procurement Services**

MTS are supported by a specialist team of Bio-Medical Engineers, Clinical Scientists, and MCIPS qualified Procurement experts.

With over 25 years of operational knowledge and service, MTS has successfully commissioned over 40 large hospital developments in the UK and Internationally.

We are currently supporting NHS Trusts who are part of the New Hospitals Programme RAAC and Wave I schemes.

Services provided include:

- Medical Equipment Planning
- Hospital 2.0 Analysis
- Business Cases
- Cost Advisory
- Room Data Sheet Management
- Specification and Technical Advisory
- Procurement and CIP Savings.
- Medical Device Management

MTS is working with NHS and Private Sector Hospital clients to work collaboratively with all project stakeholders and we are IHEEM Approved Authorised Clinical Engineers .



Please contact Ruth Strickland, Chief Operating Officer on 01442 216785 +44(0)7775522948
Email: Office.support@mtshealth.co.uk



Contact

Jaime Bishop,
Chair

architectsforhealth.com
info@architectsforhealth.com

Architects for Health

For over 30 years, Architects for Health has been a forum for sharing best practice, knowledge, innovation and thought leadership in the healthcare built environment.

With more than 750 members from over 500 organisations, our membership reflects the growing range of skills and expertise necessary to design healthcare spaces fit for the future. We welcome NHS members for free, collaborate with academic partners such as the Bartlett Real Estate Institute (BREI) and work with universities across the UK and internationally, encouraging talented architects to work in a sector where their skills can deliver tangible social value.

As partners to SALLUS Global Knowledge Exchange, we support a knowledge-led programme of research and practice at the European Healthcare Design Congress and celebrate successful healthcare design through the European Healthcare Design Awards and Design Matters.

Our work falls under four strategic pillars:

- 1. Strategic engagement**, comprising leadership and engagement with the Future Standards Working Group (FSWG), and contributing to the development and refinement of procurement processes and policy.
- 2. Knowledge share**, focused around our three thought leadership streams of 'Mind', 'Mend' and 'Matter', featuring a combination of online and in-person events that support continuing professional development. (CPD).
- 3. Best practice**, providing access to pioneering healthcare projects through case studies, building visits, exhibitions and events.
- 4. Fostering future talent**, through our hugely popular annual Student Design Awards, the Ann Noble Research Award (ANRA) annual academic bursary and a new Future Leaders programme, welcoming the next generation of healthcare leaders to AfH.

To discover how you can get involved, visit: architectsforhealth.com



SPECIFY SPACES TO HEAL WITH CONFIDENCE.

Saint-Gobain's technical expertise and trusted solutions provide holistic systems-led solutions that support healthcare outcomes at every level. From environments designed to promote healing and acoustic comfort, to fire, thermal and façade systems backed by rigorous testing and accreditation. Our solutions help teams specify with confidence and deliver resilient estates built for the future.

» www.saint-gobain.co.uk





Contact
David Powell,
Development director

alderhey.nhs.uk

Alder Hey Children's NHS Foundation Trust

Providing community and hospital care, Alder Hey is based in Liverpool and is the UK's largest children's NHS trust. The new Alder Hey in the Park hospital opened in October 2015. Alder Hey has developed as: a centre of excellence for cancer; as well as spinal, heart and brain conditions; a Department of Health centre for head and face surgery; a centre of excellence for muscular dystrophy, and the first UK centre of excellence for childhood lupus. One of five national centres for childhood epilepsy surgery – a joint service with the Royal Manchester Children's Hospital – Alder Hey is also a designated children's major trauma centre; a leading diagnostic centre; and a centre for research, innovation and education.



Contact
Kate Copeland,
Chair

aushdc.org.au

AHDC – Australian Health Design Council

The AHDC is a non-government organisation of professionals involved and/or interested in quality design of health facilities. The aims of the AHDC are: to promote high-quality, efficient, effective, and safe health facility design that responds to the needs of the Australian populace, in terms of respecting the rights and requirements of patients, the health workforce, and the community in a sustainable natural/built environment; to promote training, education and research in health facility design to ensure the long-term sustainability of the industry; and to bring together health design professionals for networking, knowledge sharing and to promote innovation in health facility design.



Contact
Annabel Frazer,
President

Rhonda Kerr,
Committee

aushdc.org.au

Australasian Association of Health Planners (AAHP)

As the accrediting body for health planners across Australia, Aotearoa/New Zealand and the South Pacific, we represent professionals working in health systems, service planning and infrastructure, and who are progressing formal recognition pathways for Health Architects. Each member is assessed through a rigorous, peer-reviewed capability framework that verifies qualifications, experience and professional standards.

AAHP promotes engagement with accredited health planners who bring a specialised skill set and distinct body of knowledge. In increasingly complex and resource-constrained environments, our members drive strategic system transformation, service optimisation, and technology-enabled health infrastructure – bringing greater certainty to future care delivery and improved health outcomes.



Contact
Göran Lindahl,
Professor, Chalmers University of
Technology; Director, CVA

chalmers.se/en/centres

Chalmers University of Technology Centre for Healthcare Architecture

The Centre for Healthcare Architecture (CVA) is a national Swedish arena for the creation, development, exchange, and dissemination of knowledge about healthcare environments. CVA regularly produces reports, webinars and events focusing on issues related to healthcare infrastructure. As an academic centre, CVA conducts research, research training, and contributes to basic and further training in the field. The research focus for CVA is buildings and physical environments as a support and an integrated part of healthcare systems.



**European
Health
Property
Network**

Contact

Jonathan Erskine,
Executive director

euhpn.eu

European Health Property Network

The European Health Property Network brings together organisations and individuals across Europe with interests in how best to plan, design, construct and finance all kinds of healthcare buildings. We act as a knowledge-sharing hub for members, and run regular webinars, seminars and workshops on a range of topics. Recent events have focused on healthcare infrastructure sustainability, lessons for hospitals from the pandemic, the future of capital investment planning, and trends in emerging technologies. Our members comprise healthcare architects and engineers; planning and guidance authorities; finance and procurement specialists; senior clinicians; hospital directors; and health system planners.



**Great Ormond Street
Hospital for Children**
NHS Foundation Trust

Contact

Crispin Walking-Lea,
Head of healthcare planning

gosh.nhs.uk

Great Ormond Street Hospital for Children NHS Foundation Trust

Great Ormond Street Hospital (GOSH) was the first children's hospital in the UK, opening its doors on 14 February 1852. Today, GOSH is a tertiary and quaternary hospital specialising in complex treatments for rare conditions. Flagship services include cancer; cardiac, respiratory and neurosciences. Together with our research partner, the UCL Great Ormond Street Institute of Child Health, we form the UK's only academic biomedical research centre specialising in paediatrics. The multi-award-winning Zayed Centre for Rare Diseases in Childhood opened in 2019, followed by the first dedicated facility for the care of children with hearing and sight impairment, in 2021.



Contact

Elena Tsiantou,
Healthcare planning manager

guysandstthomas.nhs.uk

Guy's and St Thomas' NHS Foundation Trust

Essentia designs, builds and maintains healthcare infrastructure, and is part of Guy's and St Thomas' NHS Foundation Trust. We combine public-sector values with commercial focus, innovative thinking and modern technology to create a fantastic patient experience.

Guy's and St Thomas' NHS Foundation Trust has over 23,600 staff and comprises five of the UK's best-known hospitals – Guy's, St Thomas', Evelina London Children's Hospital, Royal Brompton and Harefield – as well as community services in Lambeth, Southwark and Lewisham. The Trust is part of King's Health Partners – one of England's academic health sciences centres – bringing together world-class clinical services, teaching and research with our partners King's College Hospital NHS Foundation Trust, South London and Maudsley NHS Foundation Trust, and King's College London.



**HEALTHCARE
DESIGN LEADERSHIP**

Contact

Danny Gibson, Robert Etchell

healthcaredesignleadership.com

Healthcare Design Leadership

Healthcare Design Leadership is a not-for-profit community interest company that provides training to empower healthcare leaders to maximise their input in the briefing, planning, design, construction and commissioning process. Our multidisciplinary faculty consists of clinicians, healthcare planners, architects, contractors, engineers and researchers. The Healthcare Design Leadership course provides an immersive introduction to the whole project life cycle, providing opportunities for hands-on experience of the process and products developed at each stage.


Healthcare Planning Academy
Contact

Danny Gibson

healthcareplanningacademy.com

Healthcare Planning Academy

The Healthcare Planning Academy is a membership organisation for healthcare planning professionals, which aims to maintain and continuously improve standards and knowledge by providing a professional development resource and an industry-wide framework of recognised accreditation. Throughout the year, the Academy supports its members to stay ahead of the curve by running regular seminars and events on a range of healthcare planning topics, discussing the latest trends and advances in the planning and design process for health infrastructure.

The Healthcare Planning Academy actively welcomes applications from new members who can demonstrate proficiency and experience in healthcare planning, with membership options inclusive of those at any stage of their professional development including new entrants.


Healthy City Design
Contact

Marc Sansom,
Chief executive and co-founder

Max Farrell,
Chair

healthycitydesign.global

Healthy City Design

Launched in 2017, the Congress brings together leading researchers, practitioners, investors, city leaders, community activists and policy thinkers from across the fields of urban planning, public health, housing, real estate, transport, education, healthcare and sustainable development.

Following six years in London, the Congress now moves between different UK cities every two years, partnering with the host city. In 2023 and 2024, it was held in Liverpool at the Royal College of Physicians' northern home, The Spine. Last year and this year, it is being held at Lowry, MediaCity in Salford, Greater Manchester on 20-21 October.

**Contact**

Hua Dong,
Executive director

hhcd.rca.ac.uk

The Helen Hamlyn Centre for Design, Royal College of Art

The Helen Hamlyn Centre for Design in London is the Royal College of Art's largest and longest-running centre for design research.

We are an international leader in people-centred and inclusive design – the process of designing products, services and systems for ease of use by the maximum number of people.

**Contact**

Matthew Tulley,
Redevelopment director

imperial.nhs.uk

Imperial College Healthcare NHS Trust

Imperial College Healthcare is the sixth largest NHS trust and London's largest teaching hospital. It provides care for 2.4 million people in northwest London, and for patients beyond in need of specialist treatment.

The Trust's delivery of clinical excellence and education is underpinned by its focus on research and innovation. In partnership with Imperial College London Faculty of Medicine, it is part of the UK's first new academic health science centre. The Trust is also part of the National Institute for Health Research (NIHR) and the NIHR Health Informatics Collaborative..

SWL Healthcare Ltd

Innovative Automated Pneumatic Solutions for Modern Healthcare



At **SWL Healthcare Ltd**, we specialise in designing and delivering **automated pneumatic systems** that improve efficiency, accuracy, and reliability across healthcare environments.

Our Solutions Include:

- **Automated Pneumatic Tube Systems** – fast, secure transport of samples, medications, and supplies tailored to your site.
- **Automated Waste and Laundry Transfer** – efficient, hygienic, and sustainable waste and laundry handling for healthcare facilities.
- **Medication Management Systems** – safe, automated dispensing and distribution for improved accuracy.
- **Maintenance & Support Services** – ensuring continuous, reliable operation.

Key Benefits:

- Improved workflow efficiency.
- Reduced manual handling and errors.
- Enhanced infection control and hygiene.
- Time and cost savings for healthcare facilities.
- Reliable systems backed by expert support.



■ **Phone:** : +44 1299 382252
■ **Email:** : jcotter@swlh.co.uk

SWL Healthcare Ltd – *Driving Efficiency Through Automation*



Moorfields Eye Hospital NHS Foundation Trust

Moorfields Eye Hospital NHS Foundation Trust is the leading provider of eye health services in the UK and a world-class centre of excellence for ophthalmic research and education. At more than 25 sites in and around London, we treat and care for patients with a wide range of eye problems, from common complaints to rare conditions that require treatment not available elsewhere in the UK. The volume and variety of conditions treated by our clinicians gives them a specific range of skills and knowledge.

With our partners at the UCL Institute of Ophthalmology, we are a national and international centre for research into eye conditions and treatments, leading one of the most extensive ophthalmic research programmes in the world.

Contact

Kieran McDaid,
Director of capital, estates and
major projects

moorfields.nhs.uk



National Arts in Hospitals Network

The National Arts in Hospitals Network (NAHN) is the UK network for arts managers working in UK hospitals. It offers a place to share best practice, build knowledge and evidence, celebrate success, and develop a UK-wide programme. Our vision is for every patient, visitor and staff member in UK hospitals to have access to high-quality, impactful arts interventions to support recovery and wellbeing.

We want to embed high-quality arts programmes in every hospital in the country, using an evidence-based quality framework to improve the environment and experience of being in hospital for every patient, visitor, and staff member.

Contact

Ruth Charity,
Arts Lead, Oxford University
Hospitals NHS Foundation Trust

nahn.org.uk



Sykehusbygg

Founded in 2014, Sykehusbygg (the Norwegian Hospital Construction Agency) is owned by Norway's four regional health authorities, which, in turn, derive their funding from the Norwegian Ministry of Health. The agency aims to ensure national know-how for hospital planning, design, engineering and construction remains at the highest international level. Sykehusbygg seeks to facilitate and contribute to progressive hospital development projects through innovation, experience, standardisation, project management, and best practices. It also looks to ensure that experience from management and operation of hospital property is considered in new hospital projects.

Contact

Unni Dahl,
Hospital planner

sykehusbygg.no



Velindre University NHS Trust

Velindre University NHS Trust provides specialist cancer and blood services across South and Mid Wales through the Velindre Cancer Centre and the Welsh Blood Service. Through our Transforming Cancer Services in South East Wales Programme, we are working to build a new Velindre Cancer Centre in Whitchurch, Cardiff, with a satellite radiotherapy centre in Abergavenny. Our design focus for the new cancer centre is both patient-centred and environmentally focused – our ambition is that this will be the greenest hospital in the UK.

Contact

David Powell,
Project director – New Velindre
Cancer Centre

velindre.nhs.wales

Maxi Sky 2



For more
information call
Arjo now on
01582 745700 or
visit arjo.com

Clinical research has shown that ceiling lifts prevent unnecessary injuries in care environments, save valuable time, and reduce unnecessary costs.¹

The Maxi Sky portfolio is a comprehensive ceiling lift system and offers unique solutions for completing safe, effective and dignified patient and resident handling tasks²

Intuitive controls and innovative features means Maxi Sky® 2 is reliable and always ready for use, enabling caregivers to deliver the best possible care with the efficiency they need²

New KWIKtrack™ track system provides the optimum installation solution tailored to your specific situation and needs²

- Easy plug n' play upgrades
- Easier access for maintenance
- Expanded spreader bar portfolio to meet more specific needs
- Interchanging between spreader bars and stretchers is intuitive, safe, and fast when using the new Quick-Connect feature
- The optional Powered Dynamic Positioning System (PDPS) allows caregivers to handle patients with ease

1. **References:** Alamgir, H., O. W. Li, et al. (2009). "Evaluation of ceiling lifts in health care settings: patient outcome and perceptions." AAOHN J 57(9): 374-380. Alamgir, H., O. W. Li, et al. (2009). "Evaluation of ceiling lifts: transfer time, patient comfort and staff perceptions." Injury 40(9): 987-992. Alamgir, H., S. Yu, et al. (2008). "Efficiency of overhead ceiling lifts in reducing musculoskeletal injury among carers working in long-term care institutions." Injury 39(5): 570-577. Chhokar, R., C. Engst, et al. (2005). "The three-year economic benefits of a ceiling lift intervention aimed to reduce healthcare worker injuries." Appl Ergon 36(2): 223-229. Dutta, T., P. J. Holliday, et al. (2012). "A biomechanical assessment of floor and overhead lifts using one or two caregivers for patient transfers." Appl Ergon 43(3): 521-531. Engst, C., R. Chhokar, et al. (2005). "Effectiveness of overhead lifting devices in reducing the risk of injury to care staff in extended care facilities." Ergonomics 48(2): 187-199. Marras, W. S., G. G. Knapik, et al. (2009). "Loading along the lumbar spine as influence by speed, control, load magnitude, and handle height during pushing." Clin Biomech (Bristol, Avon) 24(2): 155-163. Silverwood, S. and M. Haddock (2006). "Reduction of musculoskeletal injuries in intensive care nurses using ceiling-mounted patient lifts." Dynamics 17(3): 19-21.

2. **Source:** 01.LG.00.1.GB.1.AHG <https://www.arjo.com/int/products/safe-patient-handling/ceiling-lift/maxi-sky-2/>

AECOM

Contact

Richard Mann,
Healthcare and science leader /
Director

aecom.com

 Silver Knowledge Leader

AECOM

Consistently ranked as one of the world's leading healthcare and science advisors, our professionals are sought after to provide services for leading organisations. Drawing on the expertise of our teams around the world, the vision of our healthcare practice is to create environments and systems that are people-centred and focused on improving health outcomes. We work in partnership with clients and their stakeholders to deliver facilities that are smart, sustainable, flexible and adaptable using modern methods of construction.

Our teams are engaged across the entire health economy from the fundamental scientific research that enables the delivery of modern healthcare, through to acute hospitals, specialist centres, mental health facilities and community health and wellbeing centres.

Our ability to combine technical expertise and innovation to deliver fully integrated and sustainable planning, design, construction and operations management services allows us to add value as our clients adapt to new frontiers of healthcare delivery.



altro

Contact

Rhian Davidson,
Healthcare specialist consultant

altro.com/global

 Gold Design Leader

 Exhibition Partner

Altro

Altro has been at the forefront of innovating floors and walls for over 100 years. Today, working closely with architects, end customers, engineers, designers and contractors around the world, our insight and expertise help them transform everyday spaces into environments that can improve the wellbeing of everyone that uses them.

And by consistently turning creative thinking into practical, real-world solutions, which maintain the highest standards of safety and durability, Altro has become synonymous with quality.

Archus

Contact

Victoria Head,
Chief executive officer

archus.uk.com

 Gold Design Leader

Archus

Archus is more than just a consultancy; we are partners in transformation, driving meaningful, lasting change across every level of the healthcare system.

With global expertise spanning health planners, clinicians, data analysts, project managers, strategic advisors, and technical specialists, we are designed to deliver solutions that enhance health outcomes, optimise healthcare systems, and drive innovation.

We don't just advise; we co-create patient-focused solutions, working alongside healthcare leaders to shape a future that evolves with community needs.

As a certified B-Corporation, we embrace purpose-driven growth, partnering with organisations to design healthcare spaces that enhance care, strengthen communities and contribute to a sustainable future..

Art in Site

Breathing in the Garden
Highgate East North London NHS Foundation Trust



**Sensory, harmonious spaces.
Art, interiors, wayfinding.**

www.artinsite.co.uk
hello@artinsite.co.uk 020 7039 0177



arjo.com

 Exhibition Partner

Arjo

At Arjo, we are committed to improving the everyday lives of people affected by reduced mobility and age-related health challenges.

With products and solutions that ensure ergonomic patient handling, personal hygiene, disinfection, diagnostics, and the effective prevention of pressure ulcers and venous thromboembolism, we help professionals across healthcare environments to continually raise the standard of safe and dignified care.

Art in Site

Contact

Louisa Williams,
Director

artinsite.co.uk

 Exhibition Partner

Art in Site

Art in Site makes award-winning environments that combine art, wayfinding, and interior design into unified, beautiful places.

Over 20 years, we've helped organisations like the NHS tackle fundamental problems, such as wayfinding, patient flow times, staff wellbeing, long-term-phobias – all through our integrated art approach.

We've learned that any brief, big or small, is a chance to solve problems and transform lives.

And to make the biggest impact – to truly help people as much as possible – you need to stay curious, inventive and experimental. That's why no two projects of ours will ever look the same.



Contact

Peter Ball,
Head of business development

austco.com

 Silver Knowledge Leader
 Exhibition Partner

Austco Healthcare (Europe)

Austco Healthcare is an international healthcare / digital communication and clinical workflow management solutions provider.

Established in 1986 and headquartered in Australia, it has offices in the UK, USA, Latin America, Canada, Singapore, and New Zealand.

Austco has an extensive network of partners supporting over 5000 installations in more than 60 countries, with global support teams in both eastern and western hemispheres.

The company's solutions include: nurse call systems; customisable workflow; digital signage; digital whiteboard; clinical/digital communication; integrated bedside technology; open API for integration; and enterprise reporting.



Brandon Medical®


Member of REINSBERG GROUP

Bringing Innovation to Life®

SMART technologies in the modern operating theatre.

Brandon Medical delivers adaptable, modular systems that derisk deployment in MMC builds, support Net Zero goals, and enable Digital Medicine. From Atlas Pendants® to medical lighting, UCV, medical power, video, or integrated operating room systems, we design for efficiency, safety, and seamless integration, helping clinical teams work smarter.

Designing the future of surgery.

 Join our RIBA-approved CPD to explore the principles of integrated operating theatre design — covering the systems, components, and connectivity that define modern surgical environments.



REINSBERG® GROUP

We listen. We adapt. We deliver.

**Contact**

Richard McAuley,
National specification manager

brandon-medical.com



Exhibition Partner

Brandon Medical

Brandon Medical is a UK company that delivers smart turnkey equipment for acute and primary healthcare worldwide.

For 75 years, the company's British engineering ethos and strong work ethic have driven continuous product innovation and development to provide healthcare professionals with reliable, high-quality and affordable medical equipment packages for operating theatres and critical care in more than 70 countries around the globe.

We are experts in manufacturing medical lighting, medical power and control systems, and medical audio-video systems. We have decades of practical expertise in configuring acute care areas for a regulatory and recommendatory compliant solution – with high levels of engineering contingency and resilience while maintaining a commercial design philosophy.

**Contact**

Matthew Blair,
Principal

Esme Banks Marr
Strategy director

bvn.com.au



Silver Knowledge Leader

BVN

BVN is a global architectural practice with a 100-year legacy and studios in London, Sydney, Brisbane and New York. We are dedicated to shaping environments that enhance human health and wellbeing, with a strong focus on innovation, sustainability and adaptability. Our expertise spans healthcare, workplace, civic, education, residential and urban design, allowing us to create spaces that seamlessly integrate wellness into everyday life.

For more than 50 years, we have been at the forefront of healthcare design in Australia, delivering advanced hospitals and medical facilities. Now, we are expanding our presence in the UK and Ireland to support the future of healthcare in these regions. By combining our expertise in hospital and health precinct design with a commitment to local partnerships, we aim to contribute to a more resilient, people-centred healthcare system. By applying our global insights to local challenges, we design spaces that support the evolving needs of healthcare while ensuring a healthier, more connected future for all.



cranium
HEALING SPACES

Contact

Allen Cliffe,
Director

craniumsa.co.za



Exhibition Partner

Cranium Medical Products

Cranium Medical Products is a manufacturer of specialist furniture for mental health, behavioural health, custodial, and high-risk healthcare environments.

We design and manufacture furniture that balances safety, durability and dignity, helping clinical teams create spaces that feel less institutional and more therapeutic. Our product range includes rotomoulded beds, bedside lockers, dining furniture, lounge seating, mattresses, wardrobes, and bespoke furniture solutions for demanding environments.

With a strong focus on reduced-ligature design, anti-stash detailing, ease of cleaning, impact resistance and long-term durability, Cranium supports hospitals and care providers in creating safer, calmer and more human-centred spaces.

Our mission remains simple: to create robust, beautiful and practical furniture that supports healing environments without compromising on safety.



Engineered for **flexibility**. Designed for **tomorrow**.

Design clinical environments that support changing workflows, evolving technology, and the long-term demands of modern care. We help create spaces that are **efficient** today and **adaptable** for tomorrow.

Engage with us early to bring your vision to life.

Visit Stand 20

Technology
for Life
—
Dräger



SCAN
THE
QR CODE

**Contact**

Joanna Tolputt,
Business development manager

draeger.com



Exhibition Partner

Draeger

As a global leader in medical technology with over 135 years of heritage, Dräger transforms acute care environments into spaces that protect, support and save lives. We have advanced acute care worldwide by improving clinical outcomes, enhancing patient experiences, and supporting staff satisfaction.

Dräger is a partner in the planning and implementation of future-proof, turnkey solutions. We specialise in ergonomic, patient-centred workplace designs, particularly state-of-the-art medical pendants and operating theatre lights. We provide full, hands-on support throughout the design and delivery life cycle, offering expert project management, BIM and CAD modelling, 3D visualisation, and collaborative planning through our specialist design centres. By integrating innovative technology with intelligent spatial design, we deliver high-quality, cost-effective infrastructure tailored to the demands of modern acute care.

**Contact**

Brian Hope,
Marketing director

drofus.com



Gold Design Leader



Exhibition Partner

dRofus

dRofus is the leading planning and data management platform purpose-built for the AEC/O industry, empowering project teams to plan, design and manage building data with clarity, consistency and control. Used by healthcare designers, planners, contractors and facility managers worldwide, dRofus supports real-time synchronisation with BIM tools, streamlines stakeholder collaboration and reduces costly errors, ensuring more efficient and compliant outcomes for complex projects.

From early-stage briefing to long-term facility operations, dRofus centralises all critical project data, including room data sheets, equipment lists, design standards and change tracking. Whether you're delivering repeat hospital builds, managing large-scale public infrastructure or ensuring compliance across regions, dRofus helps 'build it right the first time' and keep it right for decades to come.

**Contact**

Chris Pursey,
Key account manager –
healthcare and flooring

gerflor.co.uk



Exhibition Partner



Awards Category Partner



Lanyard Partner

Gerflor

Gerflor is an international manufacturer of high-quality flooring, interior finishes and accessory solutions, trusted worldwide in demanding healthcare environments. The company focuses on creating interiors that enhance safety, hygiene and long-term building performance. Its portfolio includes more than 4000 contemporary décors, all supported by strong research and development. Operating in over 100 countries, Gerflor is committed to a circular-economy approach, as sustainable principles guide every stage of product development.

Gradus, a UK manufacturer of contract interior solutions, complements this offering with robust wall protection, stair edgings, floor trims, barrier matting and LED lighting. Gradus has recently introduced 14 new Satin colours in its SureProtect Pure Hygienic Wall Cladding range, developed specifically for healthcare settings to improve aesthetics, hygiene and durability. The company has also launched the SureProtect Artworx collection, created with designer Kate Bond. This biophilic range brings the calming influence of the Peak District into healthcare spaces through inspiring, nature-led wall protection designs.

The Leader in Healthcare Facility Transitions Since 1993



**HEALTH CARE
RELOCATIONS**

We emphasize a **“patient focused approach”** in assisting healthcare providers with the planning, coordination and execution of efficient, seamless transitions to new facilities.



www.HCRmoves.com

Guldmann™

Contact

Lee Hubery,
New-build project manager

guldmann.com



Exhibition Partner



Awards Category Partner

Guldmann

Guldmann delivers comprehensive solutions tailored to meet current and future moving and handling needs. We specialise in creating more 'Time to Care' by addressing lifting and moving requirements, including rehabilitation, across the full spectrum of healthcare environments.

As the global landscape evolves with increasing complexity and unpredictability in societal and business challenges, Guldmann remains committed to addressing these challenges and driving change. This dedication is reflected in our second CSR report, 'Sustainability and Social Impact,' aimed at achieving our chosen UN sustainability goals.

Our services range from project consultancy and personnel instruction, through to service and assembly. MyGuldmann is a digital platform that transforms ceiling hoists into intelligent, connected elements of healthcare buildings. It provides insights into system use, performance, and life-cycle needs, supporting informed design, efficient asset management, and future adaptability. These insights enable smarter workflows and safer handling for patients and caregivers.



Contact

Jacqueline Foy,
Global health director

hdrinc.com



Diamond Health Leader



Awards Category Partner

HDR

At HDR, we believe the way we work can add meaning and value to the world. We believe that ideas have the power to inspire positive change, that colouring outside the lines can illuminate fresh perspectives, and that attention to small details often leads to the most important realisations. Above all, we believe collaboration is the best way forward.

For more than a century, HDR has been partnering with clients to strengthen communities and help solve complex challenges. Today, our expertise spans more than 14,000 employees working in over 200 locations around the world.

Our architecture, engineering, environmental and construction services bring depth, scale and insight to every project. Supported by multidisciplinary teams that include scientists, economists, builders, analysts and artists, we create an unshakable foundation for progress.



Contact

Evan Rutherford,
Project manager

hcr-moves.com



Exhibition Partner



Showcase Partner

Health Care Relocations

HCR is a transition consulting and logistics company recognised internationally for its world-class service providing healthcare facilities with elite consulting and relocation assistance. With over three decades of experience guiding and completing the planning and implementation for hundreds of healthcare facility relocations, it is considered the unrivalled specialist in its field.

Its business is dedicated solely to assisting healthcare providers with the planning, co-ordination and execution of efficient, seamless transitions to their new facilities. Its 'patient-focused approach' emphasised during the planning process carries over to its move co-ordination team and ensures that all decisions are made with the best interests of patients at the forefront.



Contact
Daisy Maslin,
Client engagement principal

health-spaces.com

 Exhibition Partner

Health Spaces

Health Spaces is a specialist consultancy dedicated to delivering better healthcare, faster. We partner with NHS and private healthcare organisations to overcome complex estate challenges and create environments that support clinical excellence. Our proprietary methodology – Understand, Create, Deliver – integrates strategic planning, design and construction into a seamless process, ensuring projects are delivered efficiently, on time and within budget.

Our multidisciplinary team combines strategic advisory services with technical expertise, covering everything from demand and capacity modelling to architecture, engineering, sustainability and project management. Acting as a single supplier for both consultancy and delivery, we provide continuity and transparency across the project lifecycle. This approach reduces risk, accelerates timelines and ensures every solution is aligned with future healthcare needs.

Health Spaces is trusted by healthcare providers to develop strategic estate plans and deliver modern, future-ready facilities. By capitalising digital tools, robust financial modelling and collaborative engagement, we help organisations unlock funding opportunities and achieve their long-term vision.



Contact
Chris Liddle,
Strategic director

Mohammed Ul-Haq,
Head of healthcare

hlmarchitects.com

 Platinum Garden Party Partner

HLM Architects

For over 50 years, we've designed and delivered healing and therapeutic environments that speed recovery and improve wellness.

Our thoughtful design ethos and clinically driven design approach has consistently delivered exemplary healthcare buildings that have patients, staff and visitors at their heart.



Contact
Andy Vernon,
Sector director of healthcare-

hoarelea.com

 Bronze Innovation Leader

 Awards Category Partner

Hoare Lea

Hoare Lea is an award-winning engineering consultancy with a creative team of engineers, designers, and technical specialists. We provide innovative solutions for complex engineering and design challenges for buildings.

We are at the heart of the transformation taking place in healthcare buildings, balancing the requirements of all stakeholders – patients, clinicians and hospital managers – to deliver innovative solutions. Our vast experience spans state-of-the-art acute hospitals through to the evolving community-based facilities; what unites them is our commitment to patient-centred designs.

Creating safe and secure healing environments is our number-one priority, working with teams to deliver flexible spaces that help hospital trusts improve efficiencies and reduce costs. Our approach also has sustainability at its heart, focusing on lowering operational costs and positively impacting the wellbeing of all stakeholders.



Contact

Jason Gibbings,
IHP framework director,
Vinci

Simon Kydd,
Managing director, healthcare,
Sir Robert McAlpine

ihprojects.co.uk



Lead Awards Partner

Integrated Health Projects

Integrated Health Projects (IHP) has been a leading provider of outstanding healthcare solutions for 23 years. As an established integrated alliance, IHP combines the stability, capacity, coverage and experience of VINCI Building and Sir Robert McAlpine. Both are major organisations working in the UK and abroad, focused on development, construction and facilities management.

IHP formed in 2003 as a principal supply chain partner for ProCure2 I/2I +/22. It has since secured its place on all lots for the P23 framework, while also supporting delivery of current National Hospital Programme cohorts. IHP has been appointed on more than 300 projects, valued at £4.49bn+, and it has been awarded a place as a Hospital 2.0 Alliance partner for the New Hospital Programme. A pioneer in standardisation, delivering low-carbon solutions across the building life cycle, we bring the technical expertise, robust cost control and programme management skills needed to safely deliver good value, high-quality facilities on time and within budget.

IMPOWER

YOUR AMBITION. DELIVERED.

Contact

Samuel Rose,
Director

impower.co.uk



Bronze Innovation Leader

IMPOWER

IMPOWER is a leading change consultancy, supporting clients to deliver transformative capital programmes that improve outcomes and maximise investment value. The company's EDGEWORK® approach supports capital projects from inception through to operational commissioning, providing the tools to maximise benefits and reduce risks associated with capital programmes. IMPOWER has worked on some of the largest and most complex public-sector capital programmes in the UK. It supports such programmes by:

- > supporting hospital readiness, commissioning and activation – delivering service change as a trusted transformation delivery partner;
- > providing strategic support to align system partners and contractors, delivering high-quality business cases efficiently; and
- > implementing neighbourhood health, working alongside health and care partners to develop cases for investment in neighbourhood health centres.

Turning strategy into operational reality, we improve flow, quality and productivity across urgent and emergency care, intermediate care and neighbourhoods through sustainable behaviour and system change.

Jacobs

Contact

Matthew Holmes,
Global solutions director,
health infrastructure

jacobs.com/what-we-do/cities-places/health-solutions



Gold Design Leader

Jacobs

At Jacobs, we're challenging today to reinvent tomorrow – delivering outcomes and solutions for the world's most complex challenges.

With approximately \$12 billion in annual revenue and a team of almost 45,000, we provide end-to-end services in advanced manufacturing, cities and places, energy, environmental, life sciences, transportation and water:

From advisory and consulting, feasibility, planning, design, programme and lifecycle management, Jacobs is helping to create a more connected and sustainable world.

LLEWELYN DAVIES

Contact
Rob Etchell,
Director

ldavies.com

 Platinum Garden Party Partner

Llewelyn Davies

The name of Llewelyn Davies, in healthcare, aviation and masterplanning, has a distinguished history, extended over six decades and encompassing a spectrum of innovation.

At the heart of our philosophy is the concept of designing for change – being concerned with the ability of buildings and their environments to flex or adapt.

Medical Architecture

Contact
Paul Yeomans,
Director

medicalarchitecture.com

 Awards Category Partner

Medical Architecture

We are specialists in healthcare architecture. We combine strategic planning and evidence-based design to create therapeutic environments that promote wellbeing and recovery.

We work closely with our clients to develop a clear vision for their estate, targeting both the treatment and the prevention of illness. We are focused on delivering advanced specialist facilities for acute health and mental health, while pioneering the next generation of proactive community healthcare settings, bringing care closer to home.

Since our beginning in 1991, we have driven innovation in healthcare architecture, designing buildings that are healthy for people and planet. We are rigorous in our sustainable design approach, using modern methods of design and construction to deliver flexible spaces with a lasting legacy.

mjmedical

Contact
Dan Gibson,
Director

mjmedical.com

 Silver Knowledge Leader

MJ Medical

MJ Medical is a leading healthcare planning and design consultancy. Established for over 35 years, we have helped plan, design and equip more than 400 healthcare facilities across 75 countries totalling approximately £100 billion in capital value. Our work includes world-leading tertiary hospitals, remote rural health clinics, and everything in between.

Our extensive and diverse global experience enables us to deliver innovative services that are sensitive to local cultural and socio-economic considerations. The knowledge base we derive from our research and development programme supports the provision of intelligent, flexible healthcare buildings able to respond to future changes in clinical best practice, medical technology and the needs of the communities they serve. Our team of experienced economists, academics, architects, engineers, procurement specialists and clinicians deliver tailored, evidence-based solutions at all stages of the healthcare facility development process.

We understand the motivations and priorities of different stakeholders in the healthcare facility development process, from financier to operator; from construction contractor to clinicians and patients. Our skill lies in collaborating with those stakeholders to arrive at a solution that supports clinical excellence, delivers value for money, and is adaptable enough to respond to changing demand and utilisation.

M M

MOTT MACDONALD

Contact

Hannah Lewis-Jones,
Health business development lead

Kerry Harding,
Project director for health buildings

mottmac.com

 Silver Knowledge Leader

Mott MacDonald

Mott MacDonald is an employee-owned engineering, development, and management consultancy with over 20,000 people operating in 50 countries worldwide.

We plan, design, deliver, and maintain transport, energy, water, buildings, and other essential infrastructure that shapes everyday life. Our greatest strength lies in applying our expertise to solve complex challenges, creating lasting benefits for our clients and the communities they serve.

Through our industry-leading network of global healthcare experts, we design smart, adaptable facilities, shape vital infrastructure, and provide strategic advice to NHS trusts and boards. By connecting health and care systems, we help improve outcomes, enhance wellbeing, boost efficiency, and build resilience across healthcare estates.



Contact

Ruth Strickland,
Chief operating officer

mtshealth.co.uk

 Gold Design Leader

 Welcome Reception Partner

 Exhibition Partner

MTS Health

MTS Health is a 50-strong practice providing equipment advisory for the planning and delivery of hospitals, alongside the management of medical devices. It is one of the UK's leading advisors in the planning, procurement, installation and commissioning of large and specialist healthcare projects, including the New Hospital Programme. MTS works closely with NHS executives; stakeholders, cost advisors, design teams, construction and MEP partners; health planners and finance leads. Our work is underpinned by our team of experienced clinical engineers, MCIPS procurement specialists and clinical scientists, who work with and procure medical and non-medical equipment all year round.

MTS delivers service and maintenance and OEM contract management as part of our clinical engineering team, who have up-to-date knowledge of current technologies, life cycles and costs. Our bespoke tool to evaluate compliance to MHRA guidance provides assurance and benchmarking that this is being done compliantly and efficiently.



Contact

Francesca Simoni,
Director, health sciences

Frank Panici,
Vice-president, health sciences

norr.com

 Awards Category Partner

Norr

NORR is a global team of 750 architects, engineers, planners, and interior designers, creating design strategies and solutions that express the individual vision of every project. Our Health Sciences team brings extensive knowledge of complex healthcare environments, shaped through collaboration with leading clinicians across many of the world's top hospitals. This experience informs our approach to briefing and design, placing clinical functionality and operational performance at the heart of every project. Guided by human-centric and evidence-based principles, NORR creates environments that support healing and wellbeing, while improving the experience of patients, families and staff.

The team adopts advanced technology within an immersive and collaborative user engagement workflow. Virtual reality and in-situ simulation enable clinicians to actively shape their environments, strengthening decision-making and supporting better outcomes from concept through to delivery.

Furniture that reduces risk by design



**DESIGNED FOR ENVIRONMENTS
WHERE DETAILS MATTER**

**BROWSE AND DOWNLOAD OUR
FULL PRODUCT CATALOGUE**

or visit www.craniumsa.co.za



PARKIN

Contact
Kyle Basilius,
Principal

Claire O'Donnell,
Principal

parkin.ca

 Bronze Innovation Leader

Parkin Architects

Parkin Architects is an award-winning architectural firm dating back to the 1940s, recognised for its expertise in recreational, research, correctional, healthcare, and institutional facilities. With offices in Toronto, Ottawa, and Vancouver, Parkin delivers client-focused services across Canada and globally.

Integrity underpins Parkin's practice and long-standing client relationships. The firm is valued not only for architectural excellence but also for strategic insight and deep market knowledge. Parkin takes a collaborative, hands-on approach, working closely with clients, consultants, and user groups to deliver solutions that align with functional goals and operational needs. By remaining at the forefront of industry research, the firm integrates forward-thinking yet feasible solutions tailored to each project.

REDS10

Contact
Richard Fox,
Director

reds10.com

 Showcase Partner

Reds10

Reds10 is transforming how buildings are designed, manufactured and delivered. As pioneers of industrialised construction, we integrate design, manufacturing and delivery under one roof.

Our Design for Manufacturing and Assembly-led, AI-enhanced approach means faster builds, reduced waste and better outcomes. We build with purpose, delivering schools, homes and infrastructure that perform better for communities.

Rockfon®

Contact
Melanie Hayman,
Specification manager

rockfon.co.uk

 Exhibition Partner

 Showcase Partner

Rockfon

Rockfon, a division of the Rockwool Group, has manufactured acoustic solutions for over 65 years. We have supplied thousands of healthcare projects across the world and understand the evolving challenge of excessive noise and its negative impact on the patient experience.

The Rockfon acoustic range includes acoustic ceiling tiles and grid, islands, baffles, wall panels and acoustic timber – products used to create well-designed, serene acoustic environments, supporting better patient outcomes and reduced stress levels. Our suspended ceiling systems also meet rigorous hygiene standards. Our products are made of stone wool, which is produced from abundant natural volcanic rock and recycled materials. Durable and easily recycled, they contribute to a more circular and sustainable economy and future.

Ryder

Contact
Paul Bell,
Principal

ryderarchitecture.com

 Silver Knowledge Leader

Ryder

We are more than an architectural practice – we're a team of teams with diverse and extensive expertise. We lead projects in an integrated way, delivering exceptional value and a positive impact for our clients and communities.

Founded in Newcastle upon Tyne in 1953, we now have teams collaborating across the UK and internationally, with a shared commitment to our ethos of 'Everything architecture' – to improve the quality of the world around us and, in doing so, improve people's lives.

Rockfon acoustic ceilings: Designed for hygiene



Where cleanliness is critical and design still matters

Rockfon's MediCare ceiling tiles play a vital role not only in creating a calming environment, but also in maintaining strict hygiene standards. Available in exposed, recessed or concealed finish and in a range of sizes, they also provide a contemporary aesthetic appeal.

To learn more, visit

rockfon.co.uk/products/rockfon-medicare-plus

Sounds Beautiful

**Contact**

Tushar Gupta,
Vice-president, sector leader, health

Tariq Amlani,
Vice-president, health sector lead

Jennifer Storey,
Senior principal, health sector lead

Brenda Bush-Moline,
Senior vice-president

stantec.com/en/markets/health



Bronze Innovation Leader

Stantec

What sets Stantec apart is not only our scale but the way we work together. By collaborating across sectors, disciplines, and geographies, we bring the best of our global expertise to every project – creating places that support health, healing, and wellbeing. This approach has positioned us as one of the most recognised health design firms worldwide.

Since 1990, our London studio has partnered with both the NHS and private-sector clients across the UK, forming a vital part of our integrated global health practice across the UK, Canada, the United States, Australia, and the Middle East. Our teams routinely collaborate on some of the most complex healthcare developments globally, including the £870 million Arthur J.E. Child Comprehensive Cancer Centre in Canada.

Through thoughtful, evidence-based design, we are committed to improving health worldwide – connecting millions to health and wellness.

**Contact**

Richard Evson
Business manager – digital health

staticsystems.co.uk



Registration Desk Partner

SSG | Static Systems Group

At SSG, we design and deliver digital nurse call, bedhead services trunking, and fire safety systems that support safe, efficient and responsive care. Our solutions are used every day across hospitals and complex environments, helping people feel safe, staff stay connected, and care teams respond quickly.

With over 60 years' experience, we're committed to long-term relationships, continuous improvement, and solutions that evolve alongside the needs of modern healthcare across the UK and internationally. We provide an end-to-end service, from consultation and installation through to upgrades, expansion and ongoing service and maintenance, in live clinical hospitals. Capability can be introduced in phases, supporting adoption across large organisations without destabilising key infrastructure. We deliver a reliable, compliant foundation with the capability to improve safety, efficiency, experience, and system management at a digital transformation pace that suits your organisation.

**Contact**

Ian Sawyer,
National account manager

swlh.co.uk



Exhibition Partner



Showcase Partner

SWL Healthcare

SWL Healthcare is a UK-based provider of advanced logistics and automation solutions tailored to healthcare environments. We specialise in the design, installation, maintenance and support of automated transport systems, notably Swisslog pneumatic tube systems, which facilitate the rapid, secure movement of medications, samples, documents, waste and laundry in health facilities. Our solutions help streamline internal logistics by reducing delivery times, minimising human error and improving overall operational efficiency.

The company integrates modern tracking technologies and software to ensure full traceability and accountability of transported items, enhancing workflow transparency and service reliability. SWL Healthcare also partners with global technology leaders to bring innovations, such as automated waste and laundry transfer systems, to the UK healthcare sector. Further solutions, such as cold chain and medication management, add to the company's automation portfolio.



SMARTLAYER / SMART FILM. RETROFITTED.

Privacy. Without the curtain.

Vitrm SmartLayer turns existing glass into instantly switchable privacy — a hygienic, modern alternative to the cubicle curtain, engineered for ICU and clinical care.

_ Compliance built in

The only pluggable, switchable opacity film carrying UL 962, UL E538104, ASTM E84 Class A fire-rated and FCC tested.

_ Clinically hygienic

Anti-scratch finish cleans with standard disinfection agents. On power loss the film defaults to opaque — privacy is held.

_ Retrofit without disruption

Plug-and-play, low-voltage install. No glass replacement and no certified electrician — viable in live clinical settings.

Visit us at Stand 17, EHD 2026

Book a project consultation — sales@vitrm.com | vitrm.com

VITRM

VITALARTS

Contact

Carmel Woolmington,
Technician and installation lead

vitalarts.org.uk/the-royal-london-hospital/billymann



Exhibition Partner

Vital Arts, Barts Health NHS Trust x Headway London

Vital Arts supports the acclaimed healthcare offered at Barts Health by delivering outstanding visual and participatory art projects across our hospitals. We provide patients, staff, and visitors meaningful cultural encounters, improve wellbeing, and reduce health inequalities among our communities. With five hospitals in east London – the Royal London, St Bartholomew's (Barts), Mile End, Whipps Cross, and Newham Hospital – serving over 2.5 million people, we view these as ideal places to introduce new audiences to contemporary art.

Headway London is a charity supporting people affected by brain injury. Working across 13 London boroughs, we offer specialist support and services to more than 800 survivors, family, friends and carers each year. We empower our community of brain injury survivors and their families to imagine new possibilities – ones filled with creativity, embracing diversity and backed by specialist support.

VITRM

Contact

Alan Murrell,
CEO

vitrm.com



Exhibition Partner

Vitrm

Privacy – at the flick of a switch. Vitrm SmartLayer transforms any glass surface into instantly switchable privacy, purpose-built for clinical environments. Our retrofittable PDLC smart film offers a hygienic, modern alternative to cubicle curtains, particularly in ICUs, where curtain laundering, infection control, and constant visual disruption remain persistent challenges. With one switch, glass moves from clear to opaque, preserving natural light and open sightlines.

SmartLayer is a UL-listed, pluggable switchable opacity film – certified to UL 962 and UL E538104 (Electrified Glazing), ASTM E84 Class A fire-rated, and FCC tested. Applications include ICU bays, telemedicine consultation rooms, nursing stations, examination areas, and behavioural health spaces. The anti-scratch finish cleans with standard disinfection agents, and in a power outage, the film defaults to opaque so that patient privacy is never compromised.



Contact

Kris Mackay,
Place director

360degreesociety.org



Bronze Innovation Leader



Exhibition Partner

360 Degree Society

360 Degree Society is a not-for-profit specialising in integrated neighbourhood health, placemaking, regeneration, and social value. We work with NHS bodies, local authorities, developers, universities, businesses, and community partners to design and deliver healthier, more inclusive and economically vibrant places.

Our approach combines over 40 years of practical experience in community-led regeneration and integrated health innovation with a strong focus on partnership, entrepreneurship, and learning by doing. We help organisations connect health, housing, education, culture, enterprise, and the wider determinants of wellbeing to create sustainable long-term change.

Our work includes nationally recognised projects and partnerships linked to neighbourhood health, integrated care, social prescribing, regeneration, and community development, including the Bromley by Bow Centre, St Paul's Way Transformation Project, the Well North Programme, and current neighbourhood health initiatives in Yorkshire, London and Surrey.

Exhibition floorplan

Please take time during the coffee and lunch breaks set aside for networking to visit the exhibition and explore some of the innovative and creative design solutions featured by organisations from the commercial, non-profit and media sectors that are making a significant contribution to healthcare design across Europe and the world. The exhibition will also be open during the Welcome Drinks Reception on the evening of Monday 15 June.

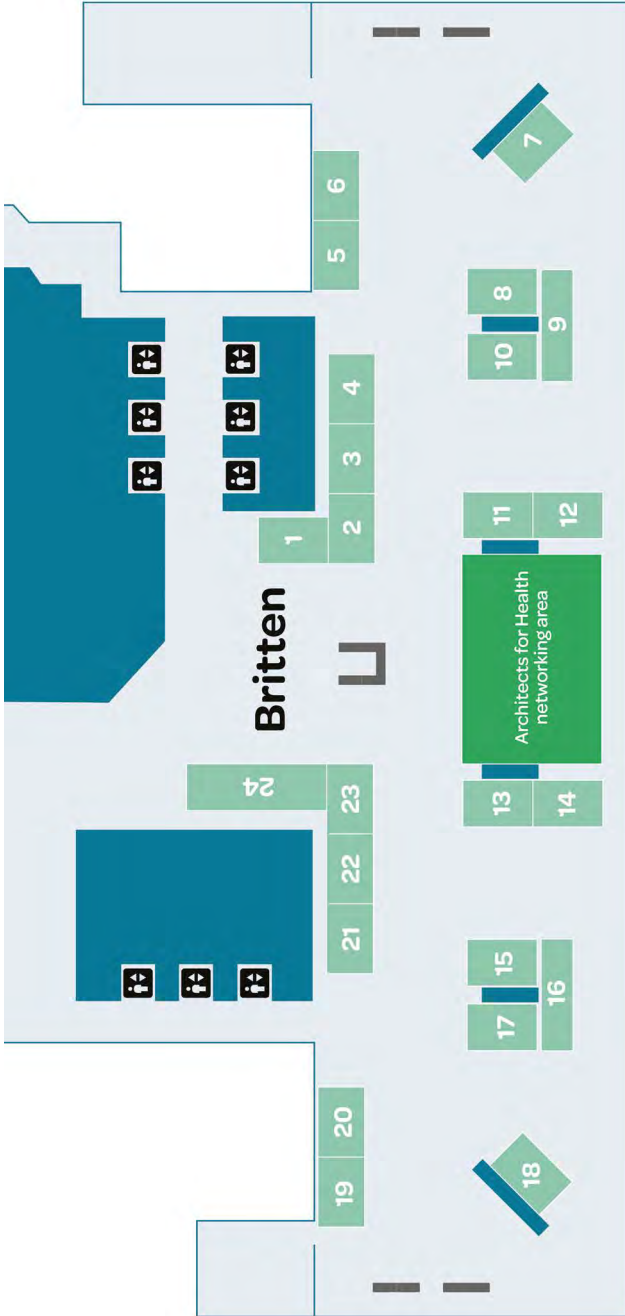
Opening times

Monday 15 June 08.00–19.00

Tuesday 16 June 08.00–16.00

- | | | | |
|----|-----------------------------|----|----------------------------|
| 1 | EHD partnerships desk | 13 | SWL Healthcare |
| 2 | Health Care Relocations | 14 | Architects for Health |
| 3 | Rockfon | 15 | Gerflor |
| 4 | Austco | 16 | Healthy City Design |
| 5 | Florence Nightingale Museum | 17 | VITRM |
| 6 | Visual Arts BARTS | 18 | dRofus |
| 7 | Guldmann | 19 | 360 Degree Society |
| 8 | Cranium | 20 | Draeger |
| 9 | Health Planning Academy | 21 | Brandon Medical |
| 10 | Arjo | 22 | MTS Health |
| 11 | Altro | 23 | Health Spaces |
| 12 | Art in Site | 24 | Speaker & information desk |





Key

-  Catering station
-  3rd floor entrance via lift



Thoughtful design to improve wellness



HLM Architects creating healing and therapeutic environments that speed recovery and improve wellness for over 60 years.

Contact our *Head of Healthcare*, Mohammed UI-Haq:

T: +44 0114 263 9600

E: Mohammed.UI-Haq@hlmarchitects.com

 **HLM
Architects**